

# WORRALL'S DIRECTORY

OF

## WARRINGTON,

ST. HELENS, PRESCOT,  
LEIGH, NEWTON-LE-WILLOWS,  
WIDNES, RUNCORN, FRODSHAM,  
ALTRINCHAM, BOWDON,  
KNUTSFORD, MIDDLEWICH,  
NORTHWICH, WINSFORD,

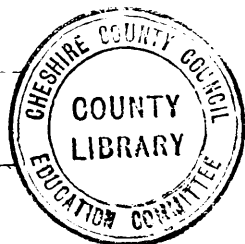
AND

## ADJOINING TOWNSHIPS.

---

Subscribers' Copy.

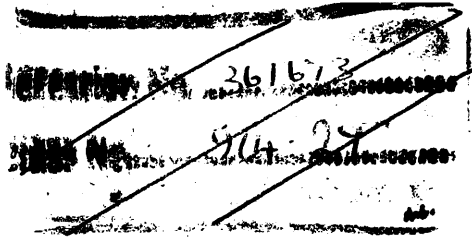
---



OLDHAM:

PRINTED AND PUBLISHED BY J. WORRALL, 15, CHURCHILL STREET.

1871.



ZL 058  
W6a

482536

## PREFACE.

---

THE great encouragement received in the publishing of district Directories of Blackburn, Bolton, Bury, Oldham, Wigan, etc., induced the publisher to undertake a similar work for Warrington and District. In its compilation, accuracy, utility, and facility of reference have been the chief objects, and the information furnished will, it is hoped, be found reliable.

The Publisher begs to thank his numerous subscribers, advertisers, and all those who have furnished him and his agents with such information he deemed necessary, in order to make the work one of ready reference and utility.

No effort shall be wanting in introducing into future issues such additions or improvements as may prove necessary.

15, *Churchill Street, Waterloo, Oldham*, 1871.



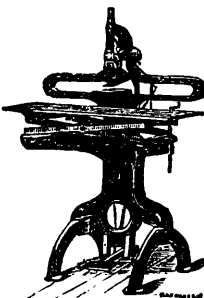
# THE BEST TREADLE PAGING & NUMBERING MACHINE,

**With American Disc Inking Apparatus.**

## EXTRACTS.

From Messrs. BROWN & NOLAN, Dublin.  
We take this opportunity of bearing testimony (unasked) to the excellence of your Paging Machines, three of which we have in work.

From Mr. F. TOOMEY, Manchester.  
The Paging Machines have given great satisfaction, especially the last one, which is much improved by the appliance for changing the consecutive to duplicate numbers.



From Mr. E. B. WARNER, Manchester.  
My opinion, formed by a practical knowledge of Paging and Perforating Machines, is, that those made by you are certainly the best I have yet seen. Having four of your make and two of other makers, I can with confidence say yours are far superior.

From Messrs. HATTON & THOMAS, Manchester.  
We have pleasure in bearing testimony to the value of your "Disc" Paging Machine. It performs its work very satisfactorily.

**Price £30. Extra Sets of Wheels, £6. Lever Machines from £10.**

## The Best Treadle PERFORATING MACHINE.

20 inch,  
With 3  
Sections,

£12 12s.

Guaranteed  
for 12  
Months.

Shippers  
and the  
trade  
supplied.



26 inch,  
With 4  
Sections,

£18 18s.

Guaranteed  
for 12  
Months.

Shippers  
and the  
trade  
supplied.

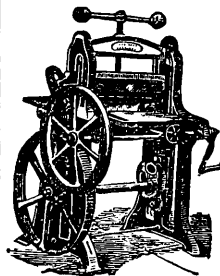
## "Schofield's" Patent Guillotine Cutting Machine.

20 inch,

£28.

26 inch,

£35.



33 inch,

£45.

38 inch,

£70.

It is the cheapest made, and has the largest sale of any yet manufactured.

# "HERCULES" GUILLOTINE CUTTING MACHINE

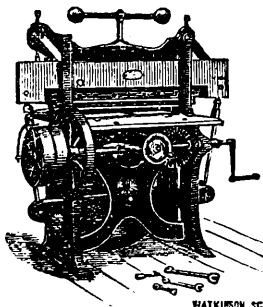
Is the most

P O W E R F U L

and

P E R F E C T

yet invented.



Is the most

P O W E R F U L

and

P E R F E C T

yet invented.

## IMPORTANT TESTIMONIAL.

Steam Printing Offices, Livery Street, Birmingham, and Tibberton Paper Mills, near Newport, Shropshire, June 8th, 1869.

Dear Sir,—We have great pleasure in testifying to the efficiency of the "Hercules" Guillotine Cutting Machine—that which you supplied us with answering to its name in every respect, and giving satisfaction to an eminent degree. We can conscientiously recommend it to all paper dealers and cutters. We are, dear Sir, yours faithfully, MARTIN BILLING, SON AND CO.—To Mr. SALMON, Manchester.

**JAMES SALMON, 13, Parsonage, Manchester.**

# INDEX TO LANCASHIRE DISTRICTS.

<p>Appleton .. .. . 183            Arbury .. .. . 81            Astley ... .. . 68            Atherton .. .. . 70</p> <p>Bedford .. .. . 86            Bewsey .. .. . 69            Burton Wood .. .. . 69</p> <p>Chowbent .. .. . 70            Collins Green .. .. . 69            Croft .. .. . 177            Culcheth .. .. . 76</p> <p>Dalham .. .. . 69            Ditton .. .. . 183</p> <p>Earlestown .. .. . 110            Eccleston .. .. . 134</p> <p>Farnworth .. .. . 183            Fearnhead .. .. . 116</p> <p>Glazebrook .. .. . 132            Great Sankey .. .. . 78</p> <p>Halewood .. .. . 184            Hanging Birch .. .. . 183            Haydock .. .. . 79            Hough Green .. .. . 184            Houghton .. .. . 81            Hulme .. .. . 196            Huyton ... .. . 81</p> <p>Kenyon . . . . . 84            Knowsley .. .. . 85</p>	<p>Leigh .. .. . 86            Lowton .. .. . 108            Luntsheath .. .. . 183</p> <p>Martinscroft .. .. . 198            Middleton .. .. . 81</p> <p>Newton-le-Willows .. .. . 110</p> <p>Orford .. .. . 115</p> <p>Parr .. .. . 134            Penketh .. .. . 116            Pennington .. .. . 86            Poulton .. .. . 117            Prescott .. .. . 118</p> <p>Rainford .. .. . 128            Rainhill .. .. . 130            Rixton .. .. . 132            Roby .. .. . 138</p> <p>St. Helens .. .. . 134            Shacklery .. .. . 178            Southworth .. .. . 177</p> <p>Tarbock .. .. . 81            Tyldesley .. .. . 178</p> <p>Upton .. .. . 183</p> <p>Warrington .. .. . 1            West Leigh .. .. . 86            Widnes .. .. . 183            Winwick .. .. . 196            Woodend .. .. . 183            Woolston .. .. . 198</p>
--	---

# INDEX TO CHESHIRE DISTRICTS.

Acton .. .. .	223	Middlewich .. .. .	254
Acton Grange .. .. .	224	Moore .. .. .	259
Agden .. .. .	224	Moulton .. .. .	259
Altrincham .. .. .	199		
Anderston .. .. .	260	Netherton .. .. .	235
Appleton .. .. .	225	Newton .. .. .	254
Appleton Thorn .. .. .	225	Newton-by-Daresbury .. .. .	259
Ashton-on-Mersey .. .. .	226	Northwich .. .. .	260
Aston-by-Budworth .. .. .	230	Norton .. .. .	274
Aston-by-Sutton .. .. .	230		
Aston Grange .. .. .	280	Ollerton .. .. .	274
		Overton .. .. .	255
Barnton .. .. .	230		
Bexton .. .. .	231	Partington .. .. .	274
Bowdon .. .. .	199	Peel Causeway .. .. .	199
Bollington .. .. .	231	Peover Superior .. .. .	275
Bostock .. .. .	232	Peover Inferior .. .. .	276
Bradley .. .. .	235	Pickmere .. .. .	276
		Plumbley .. .. .	277
Carrington .. .. .	232	Preston Brook .. .. .	277
Castle Northwich .. .. .	260		
Cogshall .. .. .	233	Ringway .. .. .	199
Comberbach .. .. .	233	Rock Savage .. .. .	278
Cuddington .. .. .	233	Rostherne .. .. .	278
		Rudheath .. .. .	278
Daresbury .. .. .	233	Runcorn .. .. .	279
Davenham .. .. .	234		
Dunham Massey .. .. .	199	Sproston .. .. .	254
Dutton .. .. .	235	Stockham .. .. .	300
		Stockton Heath .. .. .	225
Five Crosses .. .. .	235	Stretton .. .. .	300
Frodsham .. .. .	235	Sutton .. .. .	300
Grappenhall .. .. .	239	Tabley Inferior .. .. .	300
Great Budworth .. .. .	239	Tabley Superior .. .. .	301
		Tatton .. .. .	301
Hale .. .. .	199	Thelwall .. .. .	301
Hale Barns .. .. .	199	Timperley .. .. .	302
Halton .. .. .	240	Toft .. .. .	304
Hartford .. .. .	241		
Hatton .. .. .	242	Walton Superior .. .. .	304
		Walton Inferior .. .. .	305
Kekewick .. .. .	242	Warburton .. .. .	305
Kinderton-cum-Hulme .. .. .	255	Weaverham .. .. .	306
Knutsford .. .. .	243	Weston .. .. .	307
		Whitley-Over .. .. .	308
Mostock Gralam .. .. .	248	Whitegate .. .. .	309
Lymm .. .. .	249	Wilderspool .. .. .	225
Leftwich .. .. .	260	Wincham .. .. .	260
		Witton .. .. .	260
Marbury .. .. .	254	Woodhouses .. .. .	235
Marston .. .. .	260	Winnington .. .. .	260
Marton .. .. .	309	Winsford .. .. .	309
Mere .. .. .	254		

# POST OFFICE,

SANKEY STREET, WARRINGTON.

**E. B. BOWSER, POSTMASTER.**

---

---

## DESPATCHES

To MANCHESTER .. .. .	at 9 10 a.m.
„ IRELAND .. .. .	at 10 15 a.m.
„ LIVERPOOL, BIRKENHEAD, NEWTON, and the NORTH; and to LONDON, BIRMINGHAM, and the SOUTH .. .. .	at 11 40 a.m.
„ MANCHESTER and YORKSHIRE .. .. .	at 12 25 noon
„ MANCHESTER and BOLTON .. .. .	at 2 5 p.m.
„ YORKSHIRE, DURHAM, NORTHUMBERLAND, and SOUTH- EAST of SCOTLAND .. .. .	at 9 45 p.m.
„ LONDON, and All Parts .. .. .	at 11 0 p.m.

---

## LOCAL POSTS

To APPLETON, FARNWORTH, HALE, PENKETH, SANKEY BRIDGES, WIDNES DOCK .. .. .	at 5 20 a.m.
„ LYMM, THELWALL, and WARBURTON .. .. .	at 5 40 a.m.
„ CADISHEAD, HOLLINS GREEN, and WOOLSTON... .. .	at 5 45 a.m.
„ CROFT and NEWCHURCH .. .. .	at 5 45 a.m.
„ GRAPPENHALL and LATCHFORD .. .. .	at 5 45 a.m.
„ MOORE, and WALTON HIGHER and LOWER .. .. .	at 5 45 a.m.
„ STOCKTON HEATH, STRETTON, and DARESBUURY .. .. .	at 5 45 a.m.
„ WIDNES DOCK .. .. .	at 2 50 p.m.
„ LYMM .. .. .	at 3 50 p.m.

---

## ARRIVALS

From LONDON and All PARTS .. .. .	at 7 0 a.m.
„ LIVERPOOL, NEWTON, and ST. HELENS .. .. .	at 1 15 p.m.
„ LONDON, and S., E., W., LIVERPOOL, MANCHESTER... .. .	at 1 15 p.m.
„ IRELAND .. .. .	at 5 45 p.m.
„ MANCHESTER .. .. .	at 5 45 p.m.
„ LIVERPOOL .. .. .	at 5 45 p.m.

---

PILLAR LETTER BOXES, Bewsey street, Butter Market, White Cross, Winwick street,  
Bridge Foot, Church street, New Station, cleared at 11 0, 5 0, 8 15. Sunday 8 0 p.m.  
MONEY ORDER and SAVINGS' BANK business transacted from 9 to 6. Sat. to 6 p.m.



## WARRINGTON

Is an ancient market town, parish, parliamentary, and municipal borough, pleasantly situated on the north bank of the river Mersey, and on the high road between the towns of Manchester and Liverpool, 22 miles west-south-west from the former and 21 east from the latter, 13½ from Bolton, 17 from Chester, 8 from Frodsham, 12 from Leigh, 182½ from London, 6 from Newton Bridge, 29 from Preston, 6 from Runcorn, 13½ from St. Helens, and 13 from Wigan. The area of the parish is 12,872 statute acres. The population of the township in 1861 was 24,050, and in 1871 29,897, showing an increase in ten years of 5,847. The population of the parliamentary borough, in 1861 was 26,947, and in 1871 33,053, thus giving an increase of 6,106. The population of the municipal borough in 1861 was 32,083, and in 1871 26,431, thus showing a decrease of 5,652.

The population of the Union in 1861 was 43,875, and in 1871 54,395, showing an increase of 10,520. The Union comprises the following townships:—Burton Wood, Cuerdley, Grappenhall, Haydock, Houghton, Middleton and Arbury, Latchford, Newton-in-Makerfield, Penketh, Poulton-with-Fearnhead, Rixton-with-Glazebrook, Great Sankey, Southworth-with-Croft, Winwick-with-Hulme, Woolston-with-Martinscroft and Warrington.

The parliamentary borough comprises the townships of Warrington and Latchford, and the two detached portions of the township of Thelwall which lie between the body of the township of Latchford and the River Mersey. The town is governed by a mayor, eight aldermen, and 27 councillors, and is represented in Parliament by one member. The mayor and the borough justices hold courts for the trial of petty offences at the sessions house, in Irlam Street, every Monday. A county court is held the first Thursday in each month. The jurisdiction of the court comprises all the townships in the union, together with the townships of Lymm and Stretton.

The derivation of the name Warrington is ascribed to both a Roman and Saxon origin; history asserts that the latter people had a fort here, and hence its appellation is said to arise *Wocring*, implying a "fortification," and *tun* "a town." The town was the head of a hundred at the time of the dooms day survey, but is now merged in that of West Derby. The manor, with several of the townships, came into the hands of the Butlers, or Botclers, in the reign of Henry III. William de Botcler obtained from Edward I. a charter to hold a market here.

In the reign of Queen Elizabeth the manor passed from the last male heir of that family to the Earl of Leicester. It now belongs to J. Ireland Blackburne, Esq., of Hale.

The Town Hall is in Market-street, and contains the Borough Surveyor's, Borough Treasurer's, and Poor Rate Collector's Offices, Council-chamber, Committee-rooms, and Fire Engine-house.

The Union Workhouse is situated at the west-end of the town, and has a general and fever hospitals, lunatic ward, and chapel. The guardians meet here every Wednesday.

The Parish Church of St. Elphin was repaired and restored in 1862-3, and a new spire built in 1867. The architects were Messrs. F. and H. Francis, of Upper Bedford Place, London. The alterations comprise the entire restoration of the church, chancel, chapels, and tower with spire, a new north aisle, built to correspond with the south one, and a raised open roof, removal of the western gallery, and replacing the organ into the new extended western end under the large window. The whole body of the church has been

seated with open benches, giving upwards of 200 additional sittings. A new range of oak stalls has been introduced on either side of the chancel, the floor of which is laid with encaustic tiles, and the crypt restored. The church is lighted with gas, with suitable standards, and an efficient system of warming and ventilating has been adopted. The funds (about £1,300) for carrying out these extensive alterations were principally raised through the exertions of the rector, the Rev. William Quekett, M.A.

The church of Holy Trinity was erected in 1761; it is in the classic style of architecture, and has a tower, nave, aisle, chancel, organ, font and clock. The living is a perpetual curacy, and is held by the Rev. John Leach, M.A.; annual value, £135, with 70 acres of glebe land.

The church of St. Paul, erected in 1830, at an expense of £5,347, is a substantial structure, in the early English style of architecture, and has a tower, nave, aisles, chancel, and organ, six bells, font, and clock. The living is a perpetual curacy. The Rev. John Deacon Massingham, M.A., of Trinity College, Dublin, is the vicar.

The Baptists, Independents, Methodists, Presbyterians, Society of Friends, and Roman Catholics have chapels, a complete list of which, with their ministers, immediately follow.

A Public Hall, capable of holding 1,200 people, was erected in Rylands-street, by a limited liability company in 1862, at a cost of £3,500.

The Museum and Library in Bold-street was erected in 1857, at a cost of about £3,000, and contains nearly 10,000 volumes.

The Public Baths in Legh-street were opened on the 1st of May, 1866.

The Institution for the Relief of the Widows and Orphans of Clergymen who have officiated in the archdeaconries of Chester, Liverpool, and Manchester, was founded in 1867; and a Branch Institution for the Education of the Daughters of the Clergy was founded in 1844. The Diocesan Female Training School for 102 school-mistresses is in the same building; the Rev. H. C. Stubbs being principal for both schools.

The Blue Coat School was founded in 1665, by Mr. John Allen, a native of the town. In the year 1711 it was constituted an Educational Institution. In 1778 the present commodious building was erected; it was opened in 1782, under the name of the "Blue Coat Hospital." In 1855, at the suggestion of the governor, the old pupils formed a society, called "The Warrington Blue Coat Brotherly Society," which has for its objects, among others, the cultivation of a friendly feeling among those who have been educated in the school, the visiting of boys apprenticed, the relief of the needy, &c., &c.

The Warrington Educational Society have a very efficient school, receiving aid from the Committee of Council on Education, but mainly supported by the fees of the scholars. Heath Side School, connected with St. Paul's and Trinity, is supported in a similar way.

Boteler Grammar School is situated on a rising ground immediately outside the town. The building contains the head master's house, school-rooms, dormitory, &c., under one roof, and has a good play ground of about an acre adjoining. This school, formerly one of the most distinguished classical schools in the county, has lately been remodelled in accordance with more modern views of the educational requirements of the age. The routine of work is now so arranged that, while a sound classical course may be ensured to all, there is also afforded to those who desire it highly efficient instruction in such subjects as are likely to be of more practical utility to men of business. The ordinary course of instruction includes religious knowledge, Latin, French, geography, English history and grammar, drawing, physics, bookkeeping, reading, writing, arithmetic, Greek, German, Mathematics, &c.

Warrington People's College, Bank Quay; Head Master, Mr. C. Twiss; French, Mr. Huttman; Drawing, Mr. Thompson, Head Master of School of Art; Mistress, Mrs. Haydon, certificated. A highly trained staff of Assistant and Pupil Teachers. The object of the Day School for Boys and Girls is to bring a really good and comprehensive education within the reach of all. Methods of instruction, classification, apparatus, and School buildings have been developed by the aid of Government during the last twenty years, with all the aids that can be derived from the use of a good set of

text books by each pupil, and the consequent preparation of home lessons. The choice of books and the scale of payments are so arranged as to unite the greatest degree of economy with thorough efficiency, and to keep the institution quite accessible to the children of every working man; whilst, as efficient education is the same for all, it is equally adapted to the wants of the children of shopkeepers, tradesmen, manufacturers and professional men, and of all who seek a thorough commercial education at the smallest cost. For practical purposes the school is divided into three sections. A junior section for pupils from four to ten years of age. Course—Reading, spelling, writing, dictation, geography, grammar, history, singing, drawing, French, and arithmetic.

Besides the above valuable educational institutions, there are boys' and girls National schools, boys' and girls' Infants' schools, connected with the Parish Church, Free or Ragged school, and a Ladies' school for poor children; there are also the Sunday schools attached to the different places of worship.

There is a Musical Society, of which Dr. Hiles is the conductor, and lending libraries connected with several of the chapels.

Warrington is distinguished by having given to the world several productions of acknowledged merit, amongst others the work "On Prisons," by John Howard, Mrs. Barbauld's beautiful poem of "Corsica," and Roscoe's poem of "Mount Pleasant." M'Gowen, a baker, the author of "The Shavers," and "The Dialogue of Devils," *sa'tres*, lived in Bridge-street; and Litherland, the inventor of the lever watch, was born here; John Blackburne, Esq., the celebrated botanist and great researcher in natural history, had his residence at Orford Hall, near this town; and Dr. Thomas Percival, the author of "Moral and Literary Dissertations," "Medical Ethics," and founder of the Literary and Philosophical Society of Manchester, was a native of this town.

Three newspapers are published weekly—the *Advertiser*, the *Guardian*, and the *Examiner*.

The Dispensary, which is liberally supported, is situate in Butter Market street.

The town is supplied with gas by the Warrington Gas Light and Coke Company, whose premises are in Mersey-street; and the inhabitants are supplied with water by a company, whose office is in Cairo-street; the works are situated near Hill Cliff, distant about three miles. The area of the water supply has been extended and its permanence assured by the erection of pumping engines in connection with the perennial sources of supply at Winwick.

Within the last few years great improvements have been made by the Corporation. New streets have been opened out, extensive sewerage and drainage works have been prosecuted with an unflagging perseverance; and if these have been carried out at immense costs, a sensible improvement in the health and comfort of the inhabitants has resulted therefrom. The rough boulder pavements are rapidly disappearing, and will soon be numbered with the things of the past, and their place supplied with flag or brick footways and well-formed macadam roads.

The Cemetery has undergone material enlargement within the past year, and when completed will form one of the most attractive and well kept promenades in the neighbourhood.

The New Public Hall, Public Baths, and the Recreation Grounds at Arpley, the resuscitation of Floral and Horticultural exhibitions, the establishment of a Musical Society, and of a School of Art, testify to the energy and hearty willingness of the inhabitants to promote the elevation of its position, and the furtherance of every scheme of progress.

The communication between Manchester and Liverpool, by means of the Mersey and Irwell rivers is unremitting; at spring tides the former rises, at the bridge, ten and sometimes fifteen feet, when vessels of from seventy to one hundred tons burthen can attain this point. The advantage of railway communication is also enjoyed by Warrington in its connection with the London and North Western, Warrington and Stockport, and St. Helen's and Garston lines.

The London and North Western Railway Company have erected a new and commodious station, and a concentration of the high and low level lines, has effected a saving of time

as it has promoted the convenience of the travelling public. Another year will have witnessed the opening of a new and independent line through Warrington, between Manchester and Liverpool, which has been promoted by the Cheshire Lines Committee. It is now in course of construction.

The trade of the town is various, and consists of wire drawing to a considerable extent, the manufacture of files, weighing machines, tools, glass and glass bottles, bar and rod iron, a large soap manufactory, a forge, ironfoundries, breweries, maltings, chemical works, pin manufactories and cotton mills. It has long been celebrated for its files and tools, which with its pinion and music wire, have a European reputation.

Warrington and its vicinity is the centre of the tanning trade in the north of England for heavy sole leather. The greater part of the leather used in the boots and shoes which are manufactured for the army and police under Government contracts, and great quantities of leather suitable for belts for driving machinery, is made here.

There are four banking establishments here, viz:—The Liverpool and Manchester District Banking Co., Parr's Banking Co., Limited, the Manchester and Salford Banking Co., and a Savings Bank.

The weekly markets are on Wednesday and Saturday, and there is a cattle market every Wednesday. Fairs, July 11 and November 30, each continuing for ten days. There are also monthly fairs for the sale of cattle.

## LATCHFORD.

LATCHFORD is a township in the parish of Grappenhall, hundred of Bucklow, and county of Chester, separated from Warrington by the Mersey, which is spanned by a handsome bridge. The Latchford wire works and brush manufactory belonging to G. Artingstall and Co., and the chemical works of Roberts, Dale & Co., are in this township. There are also various other branches of business carried on here, including tanning, malting, pin, file, tool making, etc. A line of rail and a canal pass through the township. There are two churches, St. James' and Christ church, with schools in connection. The Baptists and Roman Catholics have each a place of worship. The acreage is 1,010, and the population was in 1861, 2,885: and in 1871, 3,144: shewing an increase of 259.

---

## PLACES OF WORSHIP AND THEIR MINISTERS.

### CHURCHES OF THE ESTABLISHMENT.

Bank Quay Mission Church, Bank Quay—Rev. John Holding.

Christ Church, Wash lane, Latchford—Rev. T. W. Powell, M.A., vicar.

Holy Trinity, Sankey street—Rev. John Leach, M.A., vicar.

St. Anne's, Winwick road—Rev. Henry Siddall, vicar.

St. Elphin's, Church street—Rev. William Quekett, M.A., rector; Rev. George F. Roberts, M.A., and Rev. J. G. Richards, B.A., curates.

St. James', Wilderspool road, Latchford.

St. Paul's, Bewsey street—Rev. J. D. Massingham, M.A., vicar.

### DISSENTING CHAPELS.

Baptist (Particular), Legh street.

Baptist, Rylands street.

Baptist (Bethel), Latchford—Rev. Joseph Wilkinson.

Friends' Meeting House, Academy street.  
 Independent (Wycliffe), Bewsey street—Rev. G. S. Reaney.  
 Methodist (Independent), Cairo street.  
 Methodist (Primitive), Legh street.  
 Methodist (Wesleyan), Bold street.  
 Presbyterian (St. John's), Winwick street—Rev. James Johnstone.  
 Presbyterian (Old), Cairo street—Rev. James Nixon Porter.  
 Roman Catholic (St. Albans), Bewsey street—Rev. Thomas Bury, priest.  
 Roman Catholic, St. James' street, Latchford—Rev. Thomas Mulvanny, priest.

## PUBLIC BUILDINGS.

### BOROUGH OFFICES, TOWN HALL.

Borough Treasurer, Charles Chorley; Inspector of Nuisances, William Heaton; Inspector of Weights and Measures, Elijah Place; Borough Engineer and Surveyor, Robert Vawser; Superintendent of the Fire Brigade, James Wood.

### COUNTY COURT, held at the Court House, Upper Bank street.

Judge, John William Harden, Esq.; Registrar, William Nicholson; High Bailiff, Robert Stevenson; Assistant Registrar, Joseph Harrison.

### POOR LAW UNION.

Workhouse, Guardian street, Froghall lane.

Governor, George Mackey; Matron, Sarah Ann Mackey; Schoolmaster, Henry M. Mines; Schoolmistress, Hannah Gettins; Clerk to the Board of Guardians, Thomas Geddes; Chaplain, Rev. John D. Massingham, L.L.D.; Medical Officer, Christopher N. Spinks; Relieving Officer, Joseph Bancroft.

Deputy Lieutenants for the subdivision of Warrington—Colonel John Wilson Patten, M.P., Bank Hall, Warrington; Lieutenant Colonel Sir Robert T. Gerard, Bart., Garswood hall.

### BOROUGH MAGISTRATES.

Charles Broadbent, Esq. (Mayor), Latchford; William Neild, Esq., Palmyra square; Henry Stanton, Esq., Thelwall; Benjamin Pierpoint, Esq., St. Austins; Peter Rylands, Esq., M.P., Bewsey house; Nathaniel D. Milner, Esq., Moore, Cheshire; Shaw Thewlis, Esq., Bank Quay; Edward Greenall, Esq., Grappenhall; Thomas G. Rylands, Esq., Heath house; George W. Hardy, Esq., Bewsey street; Charles H. Cartwright, Esq., Bewsey; Peter Robinson, Esq., Bewsey road; George Artingstall, Esq., Latchford house; John Rylands, Esq., Thelwall, Cheshire; Henry Bleckley, Esq., Latchford grange; George Crosfield, Esq., Walton Lea, Cheshire; Samuel Rigby, Esq., Bruch hall; Joseph Smith, Esq., Friars green; Charles G. Holmes, Esq., Great Sankey; Peter Smith, Esq., Oldfield house, Latchford. Clerk, H. Brown White, Esq.

### COUNTY MAGISTRATES

For Warrington Division Petty Sessions, West Derby Hundred, held at Warrington every second Wednesday in the month, and at Newton on the last Saturday in the month.

Gilbert Greenall, Esq., Walton hall; Edward Greenall, Esq., Grappenhall hall; Henry Stanton, Esq., Thelwall; Sir Robert T. Gerard, Bart., Garswood hall; John S. T. Greene, Esq., Adlington hall; Josiah Evans, Esq., Haydock; Nathaniel D. Milner, Esq., Moore; Peter Rylands, Esq., M.P., Bewsey house; Benjamin Pierpoint, Esq., St. Austins; Thomas E. Withington, Esq., Culcheth hall; Shaw Thewlis, Esq., Bank Quay; George Artingstall, Esq., Latchford house; George McCorquodale, Esq.,

Newton-le-Willows; John I. Blackburne, Esq., Hale hall; Lieut. Colonel Blackburne, Hale hall; Richard A. Cross, Esq., M.P., Broughton-in-Furness; John Rylands, Esq., Thelwall; Peter Stubbs, Esq., Statham lodge; Henry Bleckly, Esq., Latchford Grange; Joseph H. Birley, Esq., Newton-le-Willows; George Crossfield, Esq., Walton Lea; Samuel Rigby, Esq., Bruch house; Joseph Pearson, Esq., Newton-le-willows; John Mercer, Esq., Haydock.

Dispensary, 80 Butter Market street—J. I. Blackburne, Esq., president; J. White, Esq., treasurer; Joseph Davies, Esq., hon. sec.; J. H. Evans, resident surgeon, &c.; Mr. Sims, dispenser.

Government School of Art, Bold street—Col. Wilson Patten, M.P., president; John Rylands, Esq., treasurer; H. B. White, secretary; John C. Thompson, master.

Museum and Library, Bold street—William Beaumont, Esq., chairman; Charles White, secretary; Charles Chorley, treasurer; James Cooper, librarian.

Warrington Public Baths, Leigh street—Arthur F. Whittle, secretary; Richard Nettles, bath keeper.

#### WARRINGTON DISTRICT HIGHWAY BOARD,

Clerk's Office, Upper Bank street.

Chairman, Thomas E. Withington, Esq.; Clerk, H. Brown White, Esq.; Surveyor, Mr. John Thompson.

#### MUNICIPAL OFFICERS AND THEIR OFFICES.

Town Clerk, George Moore, Esq., Bank street; Borough Treasurer, Charles Chorley, Market street; Clerk to the Magistrates, H. Brown White, Esq., Bank street; Public Prosecutor, John F. Marsh, Esq., Bank chambers; Chief Constable, Samuel Hunt, Irlam street; Borough Engineer and Surveyor, Robert Vawser, Market street; Assistant Surveyor, James Wood, Market street; Secretary and Manager of Waterworks, James Riley, Cairo street; Collectors for Waterworks, Plevin & McGuire, Cairo street; Borough Rate Collector, Charles Chorley, Market street; Assistant Rate Collector, Thomas Fairhurst, Market street; Inspector of Nuisances, William Heaton, Wood street; Inspector of Weights and Measures, Elijah Place, Wood street; Librarian of Public Library, James Cooper, Bold street; Superintendent and Registrar of Cemetery, William Savage, Manchester road; Superintendent of Market, Elijah Place, Wood street; Superintendent of Fire Brigade, James Wood, Market street.

#### REGISTRARS OF BIRTHS, DEATHS, AND MARRIAGES.

Superintendent Registrar, Thomas Geddes, 3 Cario street; Registrar of Marriages, William Harrison, jun., 3 Cario street.

#### REGISTRARS OF BIRTHS AND DEATHS.

For Warrington, William Harrison, jun., 3 Cario street; for Latchford, Henry Fogg, 14 South View, Latchford; for Newton, George Appleton, Newton-le-Willows; for Rixton, George Hilton, Martinicroft; for Sankey, Benjamin Hobson, Penketh; for Winwick, Richard Turner, Croft.

#### HEADQUARTERS 9TH L.R.V., AND HEADQUARTERS FOR THE 9TH ADMINISTRATIVE BATTALION, WINWICK STREET.

Total strength, 450.

A Company, Capt. W. P. Ellis.	Lieut., J. E. Davies.	Ensign T. C. Pierpoint.
B " " S. Reynolds.		
C " " Gilbert Greenall, jun.	" W. J. Cartwright.	" G. W. Crabb.
D " " T. J. Cartwright.		
E " " Thos. Litton.	" W. Robinson.	
F " " Robt. Pierpoint.	" G. Y. Bolton.	

Lieut.-Colonel, Jas. F. Greenall; Major, Chas. H. Cartwright; Lieut.-Colonel and Adjutant, C. P. Bertram; Surgeon, P. L. Sadler; Assistant-surgeon, J. H. Gornall; Honorary Chaplain, Rev. W. Quckett, M.A.

## MISCELLANEOUS PUBLIC BUILDINGS, &amp;c.

- Borough Engineer's and Surveyor's Office, Town Hall, Market street—Robert Vawser, engineer and surveyor.
- Borough Treasurer's Office, Town Hall, Market street—Charles Chorley, treasurer.
- Bridewell, Irlam street—Samuel Hunt, superintendent.
- Cattle Market, Peter street.
- Boteler Grammar School, School brow—Rev. O. H. Cary, M.A., principal.
- Blue Coat School, Winwick street—John Bowes, master.
- Blue Coat Brotherly Society, Winwick street—John Bowes, president; W. Haydock Robinson, treasurer; John Lea, secretary.
- Cemetery, Manchester lane—William Savage, registrar.
- Corn Exchange, Blue Bell, 27 Horse Market street—Joseph Hall, inspector.
- Corporation Offices, Market street.
- County Court Office, Upper Bank street.
- Depository of the British and Foreign Bible Society, 67, Bridge street—David Bromley, depository.
- Depository of the Christian Knowledge Society, 31 Sankey street—Wm. Oakden, depository.
- Diocesan Training School, Manchester road.
- Fire Engine Station, Market street—James Wood, superintendent.
- Gas Works, Mersey street—James Paterson, manager.
- Government Tax Office, Bridge foot—Geo. S. Dixon, collector.
- Ladies' School of Industry, 3 Smith street.
- Inland Revenue Office, 82 Butter Market street—Wm. Ball, collector; Robt. Richardson, supervisor; Wm. A. Beckwith, surveyor of taxes.
- Market Inspector's Office, Wood street—Elijah Place, inspector.
- Market Hall, Market Place.
- Institution for the Relief of the Widows and Orphans of Clergymen, Manchester road.
- Masonic Lodge, 30 Sankey street.
- Militia Barracks, Wilson Patten street—Joseph T. Murray, Sergeant Major.
- Nuisance Inspector's Office, Wood street—William Heaton, inspector.
- Overseer's Office, Market street—John Pilkington, collector of poor and church rates, and assistant overseer.
- People's College, Bank Quay.
- Post Office, Sankey street.
- Police Station, Irlam street—Samuel Hunt, chief constable.
- Public Hall, Rylands street—Thomas Heald, secretary; Richard Shackleton, keeper.
- Public Baths, Legh street.
- Railway Station, Bank Quay.
- Sessions House, Irlam street.
- Stamp Office, 33, Bridge street—Samuel Mather Webster, distributor.
- Surrogates—Rev. John Deacon Massingham, M.A., LL.D., Bewsey street; and Rev. Henry Siddall, Tanners lane.
- Theatre, Scotland road.
- Town Hall, Market street.
- Town Clerk's Office, Bank street—George T. Moore, clerk.
- Warrington Exchange and News Rooms, Market gate.
- Warrington Gas Light and Coke Co., Mersey street—James Paterson, manager.
- Warrington Wagon Co., Limited, Registered Office, Commercial chambers, Horse Market street—Joseph Davies, secretary.
- Warrington Waterworks Co., Cairo street—James Riley, secretary and manager.
- Weights and Measures Office (borough), Wood street—Elijah Place, inspector.
- Weights and Measures Office (county), Upper Bank street—Robert Stevenson, inspector; William Burrows, sub-inspector.

## CONVEYANCE BY RAILWAY

ON THE LONDON AND NORTH WESTERN RAILWAY.

- Station (passengers), Bank Quay (High Level), Henry Thomas Jones, station master.  
 (Omnibuses from the Patten Arms and Commercial Hotel, and from the Red Lion Hotel, await the arrival and attend the departure of the trains.)  
 Station (goods), Bank Quay—Mr. James Thurstan, district goods manager; Edwin Smith, chief clerk; Alfred E. Ainscow, goods agent.  
 Station (Goods), Bank Quay, Great Western Co.—Arthur Hughes, agent.

ON THE ST. HELENS, GARSTON, WARRINGTON AND STOCKPORT RAILWAY.

- Station (passengers), Bank Quay (Low Level), Henry Thomas Jones, station master.  
 Station (goods), L. & N. W. Railway, Arpley Station, Bold st.—R. W. Barnes, goods agent.  
 Station (goods), Bold street, Great Northern, Manchester Sheffield and Lincolnshire, and Midland Joint Railway Companies—Joseph Green, agent.  
 Station, Latchford—Ralph Burton, station master.

## CONVEYANCE BY WATER,

FOR PASSENGERS.

- To Manchester, from Howley Quay, at six in the morning and two in the Afternoon; returning from Manchester at eight in the morning (except on Wednesdays, when it leaves at 7 a.m.), and two in the afternoon.  
 To Liverpool, Manchester and adjacent towns, the Old Quay Co., and Bridgewater Trustees, from Howley Quay—John Roscoe, agent.  
 To Liverpool and all parts of the Sankey Canal and River Weaver, from Sankey bridge—Clare & Co.—*see advertisement*.  
 On the Rivers Mersey and Weaver, and St. Helens Canal, and to Liverpool, London, and all parts of the world, from Widnes near Warrington, and 25, Water street, Liverpool—Clare and Son—*see advertisement*

## OMNIBUSES.

- To Ashton, from the King's Head, Winwick street, Wednesday.  
 To Cadishead and Patricroft, from the King's Arms, Buttermarket street, every Wednesday at 5 p.m.  
 To Northwich, from the Norton Arms, Wilderspool causeway, every Wednesday at 5-30 p.m.

## CARRIERS BY ROAD.

- To Acton, Joseph Price, from the Nag's Head, Sankey street, Wednesday and Saturday.  
 To Ashton, William Boardman, from the Goldon Horse Shoe, Horse market street, Wednesday; and William B. Crank, from the Ram's Head, Horse market street, Wednesday.  
 To Antrobus, Thomas Hayes, from the Eagle and Child, Bridge street, Wednesday and Saturday.  
 To Barton, John Rutter and Thomas Thompson, from the Feathers Hotel, Bridge street, Wednesday and Saturday.  
 To Budworth, Thomas Sumner, from the Nag's Head, Sankey street, Wednesday.  
 To Cadishead, — Taylor, from the George and Dragon, Sankey street, Wednesday and Saturday.  
 To Chester, W. Caldwell, from the Wool Pack, Sankey street, Monday, Wednesday, and Friday.  
 To Croft, Henry Ball, from the Ram's Head, Horse Market street, Wednesday and Saturday.  
 To Farnworth and Widnes, Thos. Whitfield, from the Wool Pack, Sankey street, Monday, Wednesday, and Friday.  
 To Frodsham, Joseph Farrall, from the Eagle and Child, Bridge street, and W. Caldwell, from the Wool Pack, Sankey street, Monday, Wednesday, and Friday.



- To Golborne, John Ashton and Samuel Barton, from the Ram's Head, Horse Market street, Wednesday and Saturday.
- To Halton, John Okell, from the Rose and Crown, Bridge street, daily, except Monday.
- To Haydock, William Boardman, from the Golden Horse Shoe, Wednesday.
- To High Leigh, John Watkinson, from the Rose and Crown, Bridge street, Monday, Wednesday, and Saturday.
- To Hindley, Francis Murphy, from the Ram's Head, Horse Market street, Wednesday.
- To Hollins Green, Jas. Shaw, from the Golden Horse Shoe, Horse Market street, Wednesday.
- To Knutsford, Francis Murphy, from the Rose and Crown, Bridge street, Wednesday and Saturday.
- To Little Leigh (Cheshire), Joseph Price, from the Nag's Head, Sankey street, Wednesday and Saturday; and John Rutter and Thomas Thompson, from the Feathers Hotel, Bridge street, Wednesday and Saturday.
- To Lymm, John Williamson and Thomas Moston, from the Rose and Crown, Bridge street, Wednesday and Saturday; and Peter Percival, from the White Hart, Sankey street, Monday and Saturday.
- To Newton, Wm. Boardman, from the Golden Horse Shoe, Horse Market street, Wednesday.
- To Northwich, Nantwich, &c., John Rutter and Thomas Thompson, from the Feathers Hotel, Bridge street, Wednesday and Saturday; and Thomas Sumner, from the Nag's Head, Sankey street, Wednesday.
- To Prescott, Peter Percival, from the White Hart, Sankey street, Tuesday and Thursday.
- To Preston Brook, Joseph Farrall, from the Eagle and Child, Bridge street, Wednesday, Friday, and Saturday; W. Caldwell, from the Wool Pack, Sankey street, and Benjamin Taylor, from the Eagle and Child, Bridge street, Wednesday and Saturday.
- To Runcorn, John Okell, from the Rose and Crown, Bridge street, daily (except Monday); and Peter Percival, from the White Hart, Sankey street, Wednesday and Friday.
- To St. Helens, John Hampson, from the Wool Pack, Sankey street, Monday, Wednesday, and Friday.
- To Tarporley and Weaverham, Wm. Forster, from the Golden Horse Shoe, Horse Market street, Wednesday.
- To Widnes, Thomas Whitfield, from the Wool Pack, Sankey street, Monday, Wednesday and Friday; and Peter Duxbury, from the Rose and Crown, Bridge street, Wednesday and Saturday.
- To Winwick, Wm. Boardman, from the Golden Horse Shoe, Horse Market street, Wednesday.
- To Wigan, Wm. Boardman, from the Golden Horse Shoe, Horse Market street, Wednesday; Wm. B. Crank, from the Ram's Head, Horse Market street, Wednesday; and John Ashton and Samuel Barton, from the Ram's Head, Horse Market street, Wednesday and Saturday.