

JOHN ROWE BUTTON & SONS,

Wine and Spirit . . .

Importers and Bonders,

ESTABLISHED 1801.

CHESTER.

SAMPLES AND PRICE LIST SENT ON APPLICATION.

Wynnstay Arms Hotel,

RUTHIN, N. Wales.

In the centre of the Picturesque "Vale of Clwyd."

Good Hunting, Fishing and Shooting to be obtained in the neighbourhood.

Comfortable quarters for Families, Commercials, Tourists and Cyclists. Charges moderate. . . .

GOOD STABLING. HUNTERS FOR HIRE.

Arnold House School,



CHESTER.

Principal : REV. A. H. FISH, B.A., B.Sc.

. . Second Master : A. T. WATTS, Esq., B.A., B.Sc.

(Late Scholar, Peterhouse, Cambridge).

- + + + + + +

THE School course affords sound Preparation for the PUBLIC SCHOOLS and ROYAL NAVY. Boys are also received (under 16) and prepared for SANDHURST and WOOLWICH and for the Professions. There are special facilities and opportunities for Boys taking Science, or going in for MEDICINE, or ELECTRICAL ENGINEERING.

+ + + + + + +

. . Terms for Boarders or Day Boys on application to the Principal.

COUNTY FIRE OFFICE.

No. 50, Regent Street, and No. 14, Cornhill, London.

FOUNDED 1807.

BRANCH OFFICES.

Belfast—10, VICTORIA STREET.
 Birmingham—59 & 61, COLMORE ROW.
 Bristol—CLARE STREET.
 Canterbury—ST. GEORGE'S STREET.
 Dublin—113, GRAFTON STREET.
 Edinburgh—123, GEORGE STREET.
 Exeter—QUEEN STREET.
 Glasgow—158, ST. VINCENT STREET.
 Leeds—9, EAST PARADE.
 Liverpool—BANK CHAMBERS, 3, COOK STREET.
 Manchester—68, FOUNTAIN STREET.
 Newcastle-on-Tyne—9, GRAINGER STREET WEST.
 Nottingham—EXCHANGE WALK.
 Shrewsbury—12, HIGH STREET.

TRUSTEES AND DIRECTORS.

SIB ANDREW NOEL AGNEW, BART., M.P.
 THOMAS BARNARD, Esq.
 THOMAS BARNEY, Esq.
 S. A. BEAUMONT, Esq., *Managing Director*.
 GEN. SIR HENRY BRACKENBURY, G.C.B., K.C.S.I.
 SIR FREDC. A. BURROWS, BART.
 WALTER TIDBOALD COLES, Esq.

LIEUT.-COL. SIR DUDLEY DUCKWORTH-KING, BART.
 ROBERT ALEXANDER KINGLAKE, Esq.
 THE RIGHT HON. LORD KINNAIRD.
 MAJOR-GENERAL RODERICK MACKENZIE.
 PICKERING PHIPPS, Esq.
 ALFRED SHUTTLEWORTH, Esq.
 WILLIAM H. SPENCER, Esq.

GEO. WM STEVENS, Esq.

[19]

BERNARD E. RATLIFF, Secretary.

EAGLE INSURANCE COMPANY.

(LIVES AND ANNUITIES.)

ESTABLISHED 1807.

Head Office—

79, PALL MALL, LONDON, S.W.

BRANCH OFFICE :

**Eagle Insurance Buildings,
 Cross Street, Manchester.**



Local Council

E. J. CARLISLE, Esq., Solr.
 (Messrs. GEORGE HADFIELD, BENNETT & CARLISLE).
 GEO. SPARK CLAYDON, Esq. (of Oldham), Solr.
 (Messrs. WRIGLEY, CLAYDON & TRISTRAM).
 J. T. DOYLE, Esq., Solr.

FREDERICK S. HIGSON, Esq., Solr.
 (Messrs. HIGSON & SON).
 WM. HENRY VAUDREY, Esq., J.P., Solr.
 (Messrs. VAUDREY, OPPENHEIM & MELLOR).

PHILIP SWANWICK, Manager.

ACCUMULATED FUNDS £2,536,000
 DEBENTURE POLICIES WITH GUARANTEED BENEFITS.
 MODERATE RATES. STRONG RESERVES.
 CLAIMS and BONUS PAID £13,500,000

CHES.

a

GENERAL REVERSIONARY & INVESTMENT COMPANY, LIMITED,

Office: 26, PALL MALL, LONDON, S.W.

ESTABLISHED 1836.

FURTHER EMPOWERED BY SPECIAL ACT OF PARLIAMENT, 14 & 15 VICTORIA, CAP. CXXX.

CAPITAL, £500,000. DEBENTURE STOCKS, £119,870.

DIRECTORS.

Chairman—HERBERT CHARLES MALKIN, Esq.
GEORGE EDWARD COCKRAM, Esq.
JOHN COLES, Esq.

Deputy-Chairman—GEORGE BADHAM, Esq.
SIR JAMES R. D. McGRIGOR, Bart.
ARTHUR LEDSAM SAVORY, Esq.

WILLIAM STEBBING, Esq.

AUDITORS.

J. CHALMERS-HUNT, Esq.

CURLING HUNTER, Esq.

W. J. H. WHITTALL, Esq.

BANKERS.

UNION BANK OF LONDON LIMITED, CHARING CROSS.

SOLICITOR.

HARRY SHOUBRIDGE, Esq., 26, Bedford Row, W.C.

This Company, established upwards of sixty years, purchases or makes Loans upon
REVERSIONARY INTERESTS, vested or contingent, in WELL-SECURED PROPERTY; also
LIFE INTERESTS in POSSESSION or in EXPECTATION, and
POLICIES OF ASSURANCE upon lives.

LOANS UPON REVERSIONS may be obtained either at an Annual Interest, or in consideration of redeemable deferred charges, payable upon the REVERSIONS falling in.

PRESENT INCOMES are likewise advanced upon the latter principle to persons entitled to Reversionary Interests, who may thus obtain the means of support until their property falls into possession, without being called upon for any payment until that event.

Prospectuses and Forms of Proposal may be obtained from the Secretary, to whom all communications should be addressed.

23

D. A. BUMSTED, *Actuary & Secretary.*

LAW REVERSIONARY INTEREST SOCIETY, LIMITED.

ESTABLISHED 1853.

Offices:—No. 24, Lincoln's Inn Fields, London, W.C.

CAPITAL - - £400,000.

DEBENTURES and DEBENTURE STOCK - - £208,130.

DIRECTORS.

Chairman—C. R. RIVINGTON, Esq., J.P., D.L.
ERNEST BEVIR, Esq., Devereux Chambers, Temple.
EDWARD BULLOCK, Esq., Barrister-at-Law.
The Hon. Mr. JUSTICE CHANNELL.
EDWARD DALTON, Esq., 16, Porchester Square.
JOHN C. DEVERELL, Esq., Pixham Firs, Dorking.

Deputy Chairman—The Right Hon. J. W. MELLOR, K.C., M.P.
L. W. N. HICKLEY, Esq., 10, King's Bench Walk.
ARCHIBALD H. JAMES, Esq., Norfolk House, W.C.
FREDERICK LEE, Esq., Barrister-at-Law.
ALDRED WILLIAM ROWDEN, Esq., K.C.

SOLICITORS.

MESSRS. CAPRONS, HITCHINS, BRABANT & HITCHINS, Savile Place, Conduit Street,

PURCHASES.—The Society purchases Reversions and Remainders, whether absolute or contingent; Life Interests, whether in possession or deferred, and generally all Interests (in approved property) that depend upon the duration of human life.

LOANS.—The Society also grants Loans on the security of such Interests, either on ordinary Mortgage or by way of Reversionary Charge. The latter mode meets the convenience of borrowers who do not wish to make any payment for either principal or interest until their Reversionary Property falls into possession. The amount to which the Society will then be entitled is fixed at the outset, and does not depend on the time elapsing between the grant of the Loan and its repayment. The option of redeeming the Charge during the first three or five years can usually be combined with this form of Loan.

LIFE ANNUITIES are granted by the Society in exchange for Reversions and other Interests, and also in consideration for Reversionary Charges payable when the property falls into possession. In this way a Reversioner can secure a fixed income and avoid the trouble and expense of obtaining successive loans.

The operations of the Society not only enable future expectations to be turned into present cash on fair terms, but contingent interests which may never come into possession at all are also made available for immediate uses.

The Board of Directors meet on Wednesdays at Four o'clock, to consider proposals—forms for which and full information can be obtained at the Society's Offices—but immediate consideration will be given to business where dispatch is of importance.

W. OSCAR NASH, F.I.A., *Actuary and Secretary.*

NORTHERN

ASSURANCE CO.

INCOME & FUNDS (1901).

Fire Premiums,
£752,000.

Life Premiums,
£264,000.

Interest,
£200,000.

Accumulated Funds
(31st Dec., 1900),
£5,698,000.



NORTHERN

ASSURANCE CO.

BRANCHES:

BIRMINGHAM
BRISTOL
DUBLIN
DUNDEE
EDINBURGH
GLASGOW
LIVERPOOL
MANCHESTER
NEWCASTLE
NOTTINGHAM
CHICAGO
NEW YORK
SAN FRANCISCO
MONTREAL
MELBOURNE

Head Offices:

LONDON: 1, Moorgate Street, E.C.

— ABERDEEN: 1, Union Terrace.

LOCAL BOARD OF DIRECTORS.

Colonel Robert Baring.
H. Cosmo O. Bonsor, Esq.
Ernest Chaplin, Esq.
Alex. Heun Goschen, Esq.

Henry Charles Hambro, Esq.
William Egerton Hubbard, Esq.
Ferdinand M. Huth, Esq.
Henry James Lubbock, Esq.

Charles James Lucas, Esq.
William Walkinshaw, Esq.
Rt. Hon. Sir Algernon West, K.C.B.

MANCHESTER OFFICE—ALBERT SQUARE.

Bankers—THE MANCHESTER & LIVERPOOL DISTRICT BANKING COMPANY.
Secretary—JAMES OSTLER.

Solicitors—COOPER & SONS.

General Manager of the Company—H. E. WILSON.

[16]

NORWICH UNION

FIRE INSURANCE SOCIETY

FOUNDED 1797.

Head Office: SURREY STREET, NORWICH.

BRANCH OFFICES:

MANCHESTER: 100, KING STREET (H. D. CURNICK, Esq., Manager).

LIVERPOOL: 27, CASTLE STREET (Messrs. W. H. ANDERSSON & SONS, Managers).

The confidence of the Public in the Norwich Union Fire Office
is shown by the magnitude of its transactions.

AMOUNT INSURED	-	£384,600,000
LOSSES PAID	- - -	£16,000,000
PREMIUM INCOME	- -	£1,004,700

LOWEST RATES OF PREMIUM.

PROMPT AND LIBERAL SETTLEMENT OF CLAIMS.

Prospectuses and every information can be obtained at the Chief Offices, Branches and Agencies.

APPLICATIONS FOR AGENCIES INVITED.

ONES.

a 2

THE LONDON ASSURANCE.

INCORPORATED BY ROYAL CHARTER, A.D. 1720.

FOR FIRE, LIFE, AND MARINE ASSURANCES.

Head Office : No. 7, ROYAL EXCHANGE, LONDON.

Governor, HENRY GOSCHEN, Esq.

Sub-Governor, CHARLES G. ARBUTHNOT, Esq.

Deputy-Governor, ALFRED C. COLE, Esq.

DIRECTORS.

OTTO AUGUST BENECKE, Esq.
ROBERT HENRY BENSON, Esq.
SIR ERNEST E. BLAKE, K.C.M.G.
WILLIAM THOMAS BRAND, Esq.
ARTHUR HENRY BRANDT, Esq.
COLIN F. CAMPBELL, Esq.
JOHN DENNISTOUN, Esq.
HOWARD GILLIAT, Esq.

CHARLES S. S. GUTHRIE, Esq.
GEORGE W. HENDERSON, Esq.
LOUIS HUTH, Esq.
HENRY J. B. KENDALL, Esq.
FREDERIC LUBBOCK, Esq.
ADML. SIR F. L. MCCLINTOCK, K.C.B.,
F.R.S.
GREVILLE H. PALMER, Esq.

SELWYN R. PRYOR, Esq.
GEORGE ROLFES, Esq.
JOHN M. RYRIE, Esq.
COL. LEOPOLD R. SEYMOUR.
GEORGE W. TALLENTS, Esq.
EDWARD TROTTER, Esq.
LEWIS A. WALLACE, Esq.
JOHN YOUNG, Esq.

Secretary.—C. A. DENTON, Esq.

Underwriter.—S. K. DAVIS, Esq.

Manager of the Fire and Life Departments.—JAMES CLUNES, Esq.

Actuary.—A. G. HEMMING, Esq.

The Corporation has granted Fire, Life, and Marine Assurances for more than a Hundred and Eighty Years; during that long period it has endeavoured to introduce into its practice all the real improvements that have from time to time been suggested, and to afford every facility for the transaction of business.

INCOME, 1901.

Life Premiums	£163,626 10 7
Fire Premiums	451,924 1 5
Marine Premiums	226,470 13 1
Interest	147,693 11 6
Other Receipts.....	91 17 6
	<hr/>
	£989,806 14 1

FUNDS, 31st December, 1901.

Shareholders' Capital paid up	£448,275 0 0
General Reserve Fund	325,000 0 0
Life Assurance Funds	2,145,324 13 1
Fire Fund	678,064 2 1
Marine Fund	176,780 12 3
Profit and Loss	159,488 14 1
Provision for accrued liabilities	130,257 16 6
	<hr/>
	£4,063,190 18 0

Prospectuses and Copies of the Accounts can be had on application.

PHENIX ASSURANCE COMPANY, LIMITED.

PHENIX FIRE OFFICE,

19, Lombard Street, London, E.C.

ESTABLISHED 1782.**Trustees and Directors.**

THE RIGHT HON. LORD AVEBURY, F.R.S.
 JOSEPH WILLIAM BAXENDALE, Esq.
 WALTER BIRD, Esq.
 THE HON. STUART PLEYDELL BOUVERIE.
 BRISTOW BOVILL, Esq.
 RALPH CLUTTON, Esq.
 GEORGE ALFRED GADSDEN, Esq.
 CHARLES EMANUEL GOODHART, Esq.

ROBERT KIRKMAN HODGSON, Esq.
 JOSEPH FRANCIS LESCHER, Esq.
 SIR ARTHUR CHARLES LUCAS, BART.
 ADMIRAL CHARLES D. LUCAS, V.C.
 THE HON. EDWIN PONSONBY.
 THE HON. EDWIN B. PORTMAN.
 WILLIAM JAMES THOMPSON, Esq.

Auditors.

THOS. DOUGLAS MURRAY, Esq. CHARLES LEE NICHOLS, Esq. COL. SIR WALTER GEO. STIRLING, BART.
Manager and Secretary—H. B. GUERNSEY.

BRANCH OFFICES.**West End Office:—57, CHARING CROSS, LONDON, S.W.**

BIRMINGHAM Colmore Row.	HULL 161 & 162, High Street.
BRISTOL 47, Corn Street.	LEEDS 8, Park Row.
CARDIFF 108, St. Mary Street.	LIVERPOOL Phoenix Chambers, Exchange.
DUBLIN 41, Lower Sackville Street.	MANCHESTER 18, Cooper Street.
EDINBURGH 25, George Street.	NEWCASTLE-ON-TYNE 3, St. Nicholas Buildings.
GLASGOW 121, St. Vincent Street.	PLYMOUTH Old Town Street.

... AGENCIES THROUGHOUT THE UNITED KINGDOM AND ABROAD. ...

Insurances effected against Loss by Fire and Lightning in all parts of the World. Moderate Rates for all Insurances—
 both ordinary and special. Every Insurable Risk Covered.

THIS COMPANY HAS ALREADY PAID, IN SATISFACTION OF FIRE CLAIMS, MORE THAN

TWENTY-FIVE MILLIONS STERLING.

Rates and Particulars of Insurance may be obtained at the Chief and Branch Offices, *as above*, and from the respective Agents
 of the Company.

APPLICATIONS FOR AGENCIES INVITED.

19

FOUNDED 1806.

PROVIDENT LIFE OFFICE,

50, REGENT STREET, W., & 14, CORNHILL, E.C.,

LONDON.**TRUSTEES AND DIRECTORS.**

SIR ANDREW NOEL AGNEW, BART., M.P.
 THOMAS BARNEY, Esq.
 GENERAL SIR H. BRACKENBURY, G.C.B., K.C.S.I.
 SIR FREDERIC A. BURROWS, BART.
 GEORGE EDWARD COCKRAM, Esq.
 WALTER T. COLES, Esq.
 LIEUT.-COL. SIR D. DUCKWORTH-KING, BART.

ROBERT A. KINGLAKE, Esq.
 THE RIGHT HON. LORD KINNAIRD.
 MAJOR-GENERAL R. MACKENZIE.
 JOHN H. ETHERINGTON SMITH, Esq.
 WILLIAM H. SPENCER, Esq.
 CHARLES STEVENS, Esq.

SEYMOUR A. BEAUMONT, Esq., *Managing Director.*

Invested Funds ... **£3,405,651**
 Annual Income ... **£359,002**

Bonuses Declared ... **£3,784,000**
 Claims Paid ... **£10,746,484**

EXCEPTIONALLY STRONG RESERVES.**MINIMUM PREMIUM ASSURANCE.****WORLD-WIDE POLICIES.**

£312,582 divided in 1898.

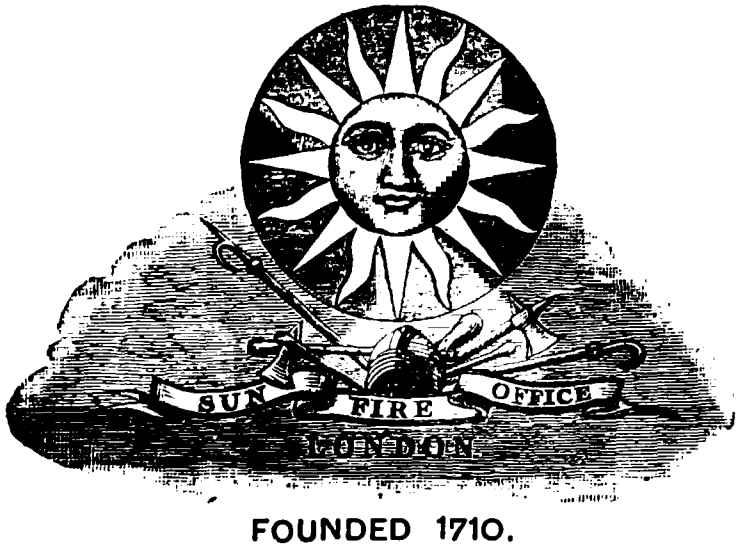
£299,601 carried forward to

NEXT DIVISION OF PROFITS, 1903.**Guaranteed 5% Investment Policies.**

All kinds of Life Assurance, Leasehold Redemption and Annuity Policies issued.

[20]

H. W. ANDRAS, Actuary and Secretary.



SUN

INSURANCE

OFFICE.

CHIEF OFFICE:—

Threadneedle Street, LONDON, E.C.

BRANCH OFFICES IN
LONDON :

{ 60, CHARING CROSS, S.W.
332, OXFORD STREET, W.
40, CHANCERY LANE, W.C.
42, MINCING LANE, E.C.

Branch Office : Sun Buildings, 15, Park Row, LEEDS.

J. B. ROBERTS, *District Manager.*

SUB-BRANCHES . . .

{ 2, Piccadilly, BRADFORD.
Station Street, HUDDERSFIELD.
32, High Street, HULL.

Directors:—

FREDERICK HENRY NORMAN, Esq., *Chairman and Treasurer.*

CECIL CHAPLIN, Esq.
EDWARD DENT, Esq.
VISCOUNT EMLYN.
ALFRED FARQUHAR, Esq.
THE HON. WILLIAM HENRY GOSCHEN.
THE MARQUESS OF GRANBY.
HENRY RIVERSDALE GRENFELL, Esq.
JOHN G. B. T. HILDYARD, Esq.
RICHARD BIDDULPH MARTIN, Esq., M.P.

THE HON. ALGERNON H. MILLS.
SIR HUGH C. G. MONTGOMERY, Bart.
LORD HENRY NEVILL.
LAMBERT POLE, Esq.
MARLBOROUGH ROBERT PRYOR, Esq.
COLONEL FREDERICK HENRY RICH.
THE HON. ARTHUR SAUMAREZ.
THE HON. CHARLES L. SCLATER-BOOTH.
CHARLES A. SCOTT-MURRAY, Esq.

GEORGE E. MEAD, }
JOHN SMITH, } *Assistant Secretaries.*

EDWARD BAUMER, *Secretary.*

The SUN INSURANCE OFFICE is the oldest purely Fire Company in the World, and has an experience of **One Hundred and Ninety-two Years.** It insures, against Loss or Damage by Fire, property in Great Britain and Ireland, the Colonies, the United States of America, and most Foreign Countries.

Revenue from Premiums, 1900 - - - - £1,070,556

Royal Exchange Assurance,

INCORPORATED A.D. 1720.

**FIRE, LIFE, SEA, ACCIDENT,
BURGLARY, GUARANTEE, AND
EMPLOYERS' LIABILITY ASSURANCES
AND ANNUITIES.**

Accumulated Funds exceed = £4,600,000.

Claims paid = = = £40,500,000.

Proposals for all classes of Insurance are invited. Applications should be made either to the Secretary,

Head Office—Royal Exchange, London, E.C.;

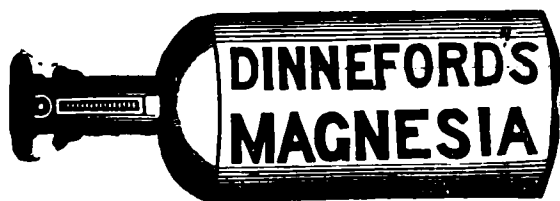
Or to the Manager, **J. PERKINS, 9, Wall Street, Liverpool.**

20

DINNEFORD'S

The Universal Remedy for Acidity of the Stomach,
Headache, Heartburn, Indigestion, Sour Eructations,
Bilious Affections.

The Physician's Cure for
Gout, Rheumatic Gout
and Gravel; the safest
and most gentle Medicine
for Infants, Children,
delicate Females and the
Sickness of Pregnancy.



MAGNESIA

Sold everywhere.

N.B.—ASK FOR DINNEFORD'S MAGNESIA.

IRON BUILDINGS & ROOFING

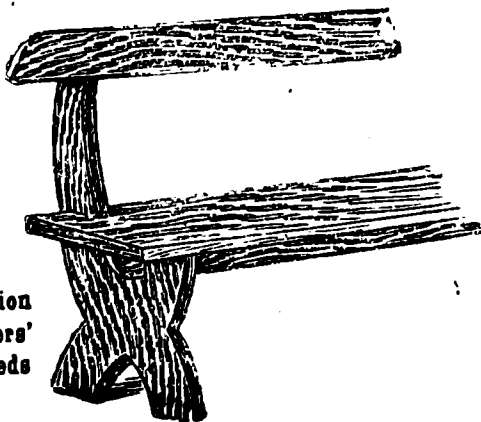
Telegraphic Address:
ECONOMICAL, LONDON.

And every description of JOINERS' WORK.

CHEAPEST HOUSE IN
THE TRADE.



New and Second-hand Churches, Chapels, Mission
and School Rooms, Cottages, Shepherds' and Keepers'
Huts, Stables, Coach-houses, Farm Buildings, Sheds
for Manufacturing Purposes, &c.

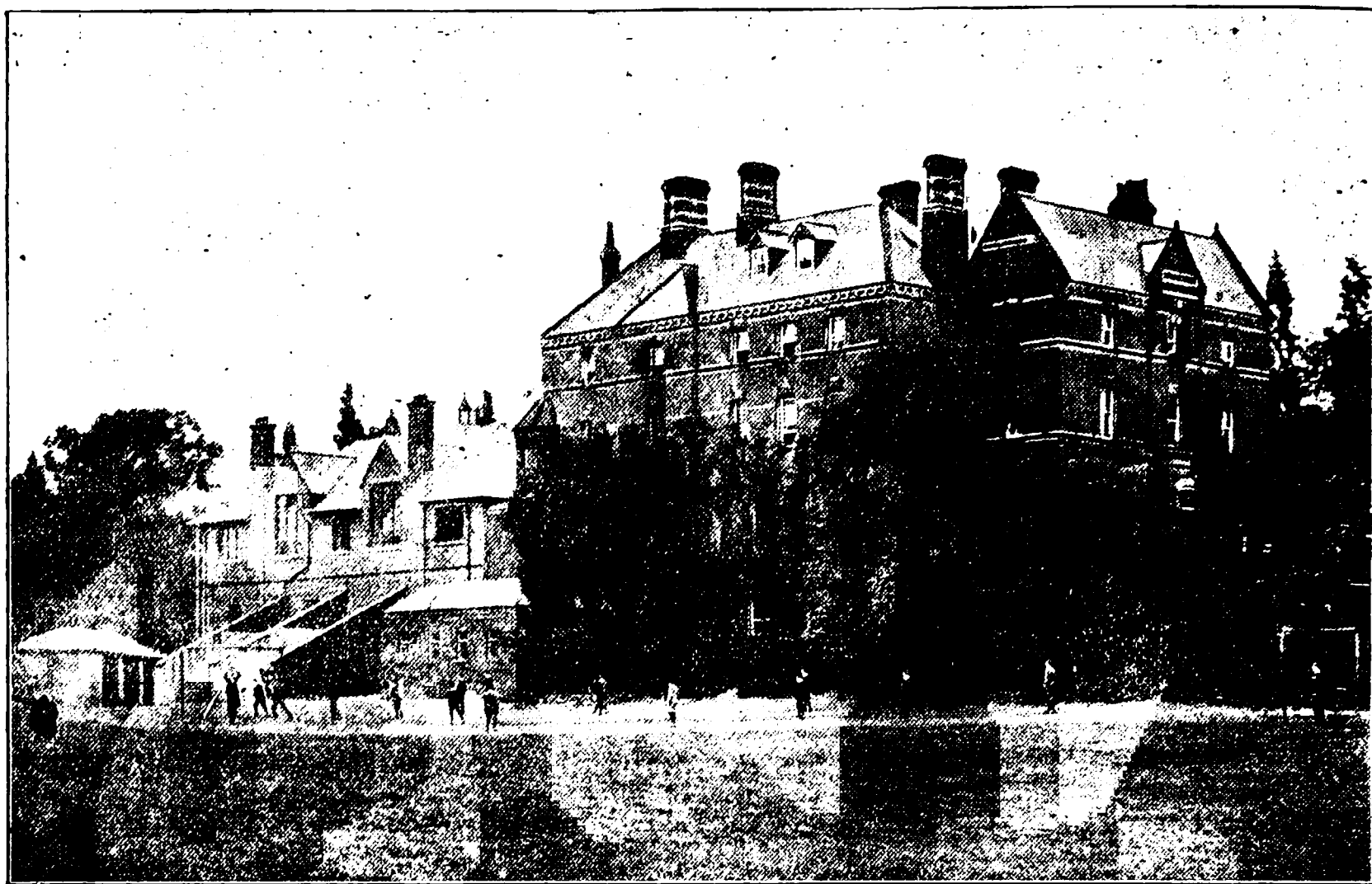


Several Buildings always on view, and 100 tons of
Iron kept in stock. Plans and Estimates for every
description of IRON BUILDINGS and ROOFING
free on application.

BUILDINGS SHIPPED AND ERECTED IN ANY PART OF THE WORLD.

W. HARBROW'S Works, South Bermondsey Station, S.E., LONDON.

South African Branch:—Jackson's Buildings, West Street, Durban, Natal.



Bowdon College,

CHESHIRE.

(ESTABLISHED 1857. ADDITIONS and RECONSTRUCTIONS, 1894 and 1897).

Head Master: W. M. SMITH, B.A., London.

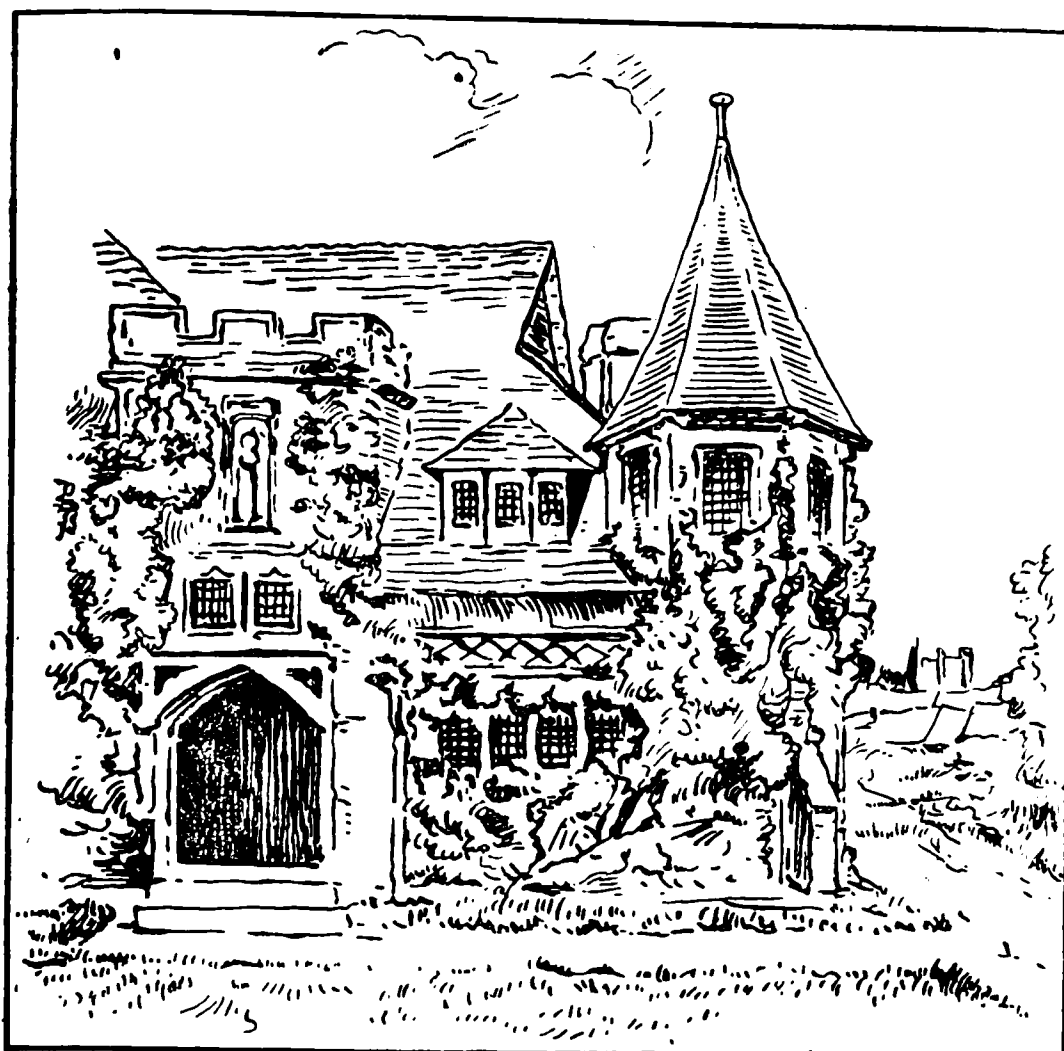
SITUATION. Very pleasant and healthy; well protected from cold winds, otherwise the climate is bracing.

DESIGN. Preparation for (i.) the PUBLIC SCHOOLS, including Scholarships. (ii.) The Universities, the Professions, the Engineering courses and the Higher Commercial Pursuits.

(The correct list of successes may be had on application).

STAFF. The Masters are Graduates.

The out-of-school life is carefully supervised by the Head Master and the domestic arrangements are directed by MRS. W. M. SMITH, B.A.



PUPILS' ENTRANCE.

— THE —
Queen's
School,
CHESTER.

*A High School for Girls,
 with Boarding Houses
 attached.*

HEAD MISTRESS:—
Mrs. Henry Sandford.

This School was opened on May 1st, 1878, and was intended to provide an education for Girls similar in general character to that given in the King's School for Boys.

GOVERNORS.

Ex-Officio : THE RIGHT REVEREND THE LORD BISHOP OF CHESTER.

Representative : HIS GRACE THE DUKE OF WESTMINSTER ; THE VENERABLE ARCHDEACON BARBER ; H. J. BIRCH, Esq. ; G. H. BRAMALL, Esq. ; F. F. BROWN, Esq. ; COL. E. EVANS-LLOYD ; G. GARDNER, Esq. ; R. O. ORTON, Esq., J.P. ; Mrs. ROBERT ROBERTS ; W. ROGERS, Esq.

Co-optative : THE RIGHT HON. THE COUNTESS GROSVENOR ; HIS HONOUR JUDGE SIR HORATIO LLOYD ; Miss BIRLEY ; Miss BROWN ; H. T. BROWN, Esq. ; Mrs. PITCAIRN CAMPBELL ; J. GAMON, Esq. ; REV. CANON COOPER SCOTT ; JOHN THOMPSON, Esq. ; Miss WILBRAHAM.

Clerk—Mr. F. B. MASON.

THE aim and object of the Queen's School is to give **A GOOD EDUCATION.** The School Course includes all the usual subjects, but is carefully modified to suit delicate or backward pupils. Special attention is given to Rudiments, to the formation of Habits of Method and to the general training of Character. The undertaking is based on the principle that not only should provision for Religious Teaching be made, but that all the proceedings of a school should be leavened with Christian Faith and Feeling.

The Religious Instruction is in accordance with the doctrine of the Church of England, but with a Conscience Clause, and due regard for the wishes of parents.

The work of the school generally is tested by periodical examinations by the Oxford and Cambridge Schools Examination Board, and pupils are also prepared for the London Matriculation and other public examinations. In music the pupils are prepared for the School and Centre Examinations of the Associated Board of the R. A. M. and the R. C. M.

[For further information, and lists of successes, see the Queen's School Annual, price One Shilling, published every year on the 24th of May, by Messrs. PHILLIPSON & GOLDBER, EASTGATE ROW, CHESTER.]

The Headmistress of the Queen's School is assisted by a highly qualified staff. Conversational lessons in French and German are given by foreigners. Class singing is taught by Dr. J. C. Bridge.

The School Building is well situated on the City Wall, facing the Welsh Hills. The garden is large enough to provide two lawn-tennis grounds, and there is also a field where the pupils play cricket.

BOARDING HOUSES:—

MISS GLASCODINE, Kingsholme, King's Buildings, Chester.

MRS. KEITH DOUGLAS, 10, Stanley Place.

MISS HEPPEL, 16, Hough Green.

THE FIRST TWO HOUSES ARE SITUATED WITHIN FIVE MINUTES' WALK OF THE SCHOOL.

WEST KIRBY, CHESHIRE.

Girton School,

BOARDING AND DAY SCHOOL FOR GIRLS
ON HIGH SCHOOL LINES.

Principals: Miss HOCKLY and Miss BUTLER.



Teaching Staff:

RESIDENT and
VISITING B.A.'s,
L.L.A. and L.R.A.M.

FOREIGN
CERTIFICATED
TEACHERS and
VISITING MASTERS.

Pupils prepared for
all Exams.

Music Pupils for
L.R.A.M.

The house is beautifully situated in one of the healthiest parts of West Kirby, overlooking the Estuary of the Dee.

Special arrangements are made for children whose parents are abroad.

References to Clergymen and the Medical Profession.

Golf, Tennis, Hockey, Croquet, Badminton.

Splendid Sea Bathing—Swimming taught.



FOR PROSPECTUS APPLY TO THE PRINCIPALS.

National Telephone : 46 Altrincham ; 46a Hale.

EDWIN WATSON, General & Furnishing Ironmonger.

RAILING,
&c.,



MADE ON THE
PREMISES.

Agent for the **SUNBEAM CYCLES.**

AGRICULTURAL IMPLEMENT DEALER.

GEORGE STREET, ALTRINCHAM,

AND . . .

ASHLEY ROAD, HALE.

Culcheth Hall, Bowdon, Cheshire.

A HIGH-CLASS

BOARDING AND DAY SCHOOL FOR GIRLS.



THIS house is large, modern and commodious, with garden, tennis lawn, field and gymnasium; specially built lofty class-rooms and airy bedrooms.

The pupils are under the constant personal care of The Misses Lang, whose aim is to provide a sound liberal education, cultivate a high, moral and refined tone, and make the hours of recreation happy and home-like.

The household arrangements and health of pupils are under the immediate superintendence of Miss Lang and a trained nurse, and the Scholastic Department under that of Miss Edith Lang, B.A., assisted by a large and highly qualified staff of English and Foreign Teachers.

Pupils have obtained high distinction in the London Matriculation, Victoria University Preliminary, Camb. Higher Local, and Oxford and Cambridge Local Examinations.

FEES:—Boarders, 70 to 80 guineas ; Weekly Boarders, 60 to 70 guineas ; Day Pupils, 24 to 30 guineas ; Kindergarten, 9 to 12 guineas. Special terms for sisters.

THE SANITARY ARRANGEMENTS ARE OFFICIALLY CERTIFIED ANNUALLY.

BY SPECIAL



APPOINTMENT.

R. BOLLAND & SONS,

→ CHESTER. ←

WEDDING * CAKES

*As supplied to Her late Majesty Queen Victoria for the Wedding of Their Majesties
the King and Queen. . .*

ILLUSTRATED CATALOGUES GRATIS ON APPLICATION.

BOXES OF FANCY CAKES OF EVERY DESCRIPTION,

3/6 and 7/- and upwards. Free by Parcel Post.

BALLS, EVENING PARTIES, DINNERS, WEDDING RECEPTIONS AND GARDEN
PARTIES CONTRACTED FOR.

— ESTIMATES ON APPLICATION. —

Visitors to Chester



TABLE D'HÔTE LUNCHEON,
3/-.

. . Will find every accommodation and an excellent Menu at . .

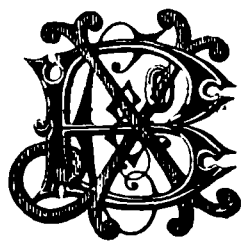
TABLE D'HÔTE DINNER,
4/6.



Bolland's Restaurant.

JOHN I. BLACKBURN & Co

ESTD?



1737.

CHESTER.

WINE & SPIRIT MERCHANTS

MOORE & BROCK, Builders' Merchants, AND COAL FACTORS, — NORTHWICH.

ROOFING SLATES

SUPPLIED FROM OUR DEPOTS—

BANGOR,

SALTNEY,

RUNCORN,

MOLD JUNCTION,

GARSTON,

NORTHWICH.

To every Railway Station in the Kingdom.

PENRHYN, VELINHELI, BANGOR, CARNARVON, PORT MADOC, WESTMORELAND and other ROOFING SLATES supplied on the Shortest Notice.

SLATE SLABS, RIDGING, CHIMNEY PIECES, CISTERNS, URINALS and every other Article manufactured in SLATE made to order. Also ENAMELLED SLATE GOODS of all kinds.

STAFFORDSHIRE GOODS.—Ridge, Flooring and Roofing Tiles, Garden Edging Tiles, Blue and White Bricks, Chimney Pots.

FIRE GOODS.—Bricks, Blocks, Bearers, Slabs, Retorts, Flue Covers and Linings, Fire Clay, &c.

SANITARY WARE.—Drain Pipes, Sinks, Traps, Grids, Cattle Troughs, &c.

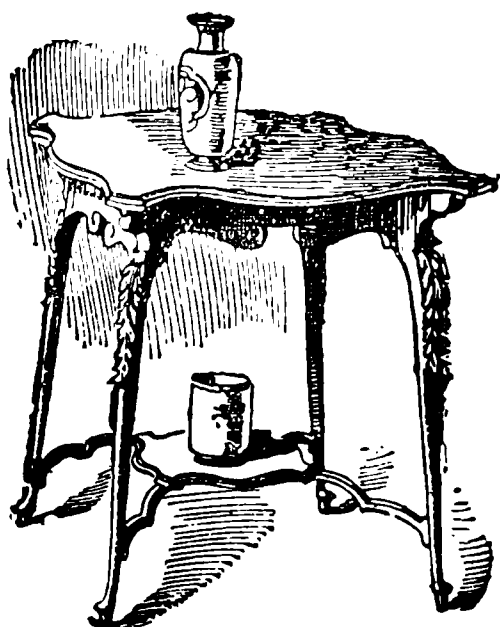
Roman, Portland and Hydraulic Cements.

PLASTER OF PARIS, WHITING, LATHS, PLASTERERS' HAIR, at the Lowest Prices. MARBLE and ENAMELLED CHIMNEY PIECES, GRATES, ROOFING FELT; BUXTON, WELSH and other LIME.

Manufacturers of Common, Pressed, Moulded and all kinds of Red Building Bricks, Drain Pipes, &c.

Quotations sent by return of Post and Orders promptly executed. Strangers writing for Prices are requested to send References or to remit with Order. 19



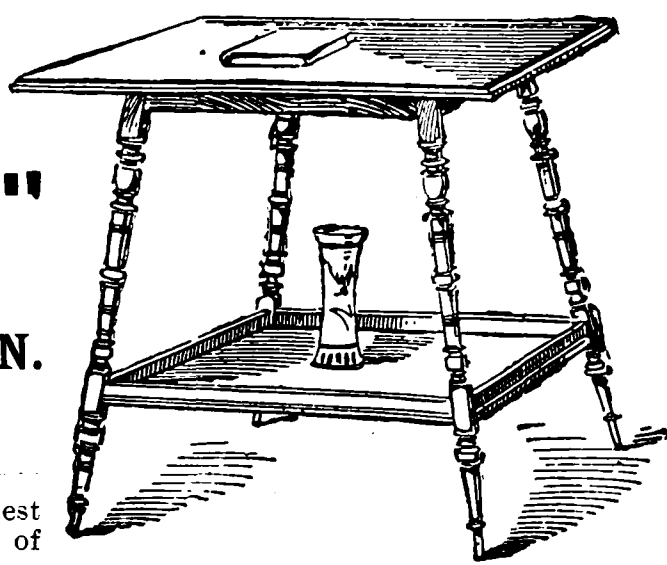


SPRAY LEG CABRIOLE TABLE.—Carved in Walnut or Mahogany, 38/6. Other Designs and Prices on application.

ARIGHI, BIANCHI & CO., LTD., MACCLESFIELD AND BUXTON.

TELEPHONE { 14 MACCLESFIELD.
0471 BUXTON.

HAVE the largest and finest selection in the North of England of High-Class Furniture at very moderate prices, to suit every one's taste and pocket.



EARLY ENGLISH SPRAY TABLE, with Tray. Mahogany or Walnut, 18/6 each. Other Designs and Prices on application.

Departments.

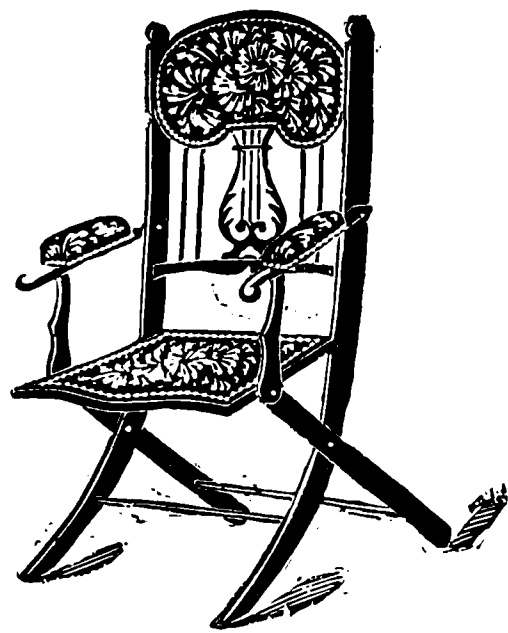
FURNITURE, . . .
CARPETS,
LINOLEUMS,
. DRAPERY,
GLASS AND CHINA,
IRONMONGERY,
BEDSTEADS,
. REMOVALS.

Furniture Repaired,
Re-polished and
Re-upholstered.

Goods Delivered free of charge.
A Visit of Inspection will be appreciated.



FOLDING CHAIR.—Polished Chippendale color, upholstered in best Genoa Velvet, 30/- Other Designs and Prices on application.



FOLDING CHAIR.—Polished Chippendale color, upholstered in best Genoa Velvet, 27/6. Other Designs and Prices on application.

Electric Lighting,

Electric & Power Transmission.

W. R. BROWN, A.M.I.E.E.,

. . 14, Mill Street, MACCLESFIELD;

AND AT

2, VICTORIA PLACE, BUXTON.

SPECIALITY:

PRIVATE INSTALLATIONS WITH GAS ENGINES,
DYNAMOS, ACCUMULATORS, &c.

LONG LIST OF CLIENTS SENT ON APPLICATION.

BELLS, TELEPHONES, &c.

General, Furnishing, Builders,
 Agricultural Ironmonger.

CHARLES A. DAY

(Late LILLIE & DAY),

 Locksmith, Gunsmith, Coppersmith,
 Gasfitter and Bellhanger. 

THE LARGEST STOCK IN THE DISTRICT

Of Kitchen Ranges, Grates, Chimney Pieces, Tiled
 Hearths, Fenders, Cutlery, Lamps, &c.

A SPECIAL SHOW OF CYCLES,
 AGRICULTURAL IMPLEMENTS AND DAIRY UTENSILS.

Works and Show Rooms—

39, Mill Street, 

Cycle and Implements Show Rooms—

8 & 10, Backwallgate,

MACCLESFIELD.

ESTABLISHED 1811.

The People's Popular  Up-to-Date Provider.

JAMES EARLAM,
 † † † **Family Grocer,**

PROVISION IMPORTER,

CORN , AND , FLOUR , MERCHANT,

VICTORIA BUILDINGS,

QUEEN VICTORIA STREET,

MACCLESFIELD.

Catherine Street Foundry.

Martin H. Watts,

Engineer, _____



Brass  Iron Founder.

STEAM ENGINES,
PUMPS,
PULLEYS AND SHAFTING,
ROPE DRIVING,
WHEEL GEARING,

GENERAL CASTINGS,
ENGINEERS' CASTINGS,
BUILDERS' CASTINGS,
BRASS CASTINGS,
BRONZE CASTINGS,

MACCLESFIELD.

ANGLES. FISH-PLATES. STEEL JOISTS.
RIVETTED GIRDERS.

~ **ROOFWORK.** **FLITCH-PLATES.** ~

✱ **NOTCHING, JOGGING AND MITRING.** ✱

HERBERT PARKES, IRON AND STEEL
MERCHANT,

St. Petersgate, STOCKPORT.

**DUNHAM ROAD,
ALTRINCHAM.**



I. T. & I. GASKARTH,

**Wine and
Spirit Merchants.**

Importers of WINES AND FOREIGN SPIRITS.

E. DALE, CHESTER.

51, Bridge Street Row.

PIANOFORTE & ORGAN MERCHANT.

**SOLE AGENT FOR
PIANOLA, ORCHESTRELLE
AND ÆOLIAN.**

— ILLUSTRATED CATALOGUES POST FREE. —

Contractors' and Builders' Merchant.

➤ **Brick Manufacturer.** ◀

Supplies all kinds of SLATES, BRICKS, QUARRIES,
SANITARY GOODS, &c., &c.

Best Portland Cement.

Plaster of Paris, Lias Lime,
Keene's Cement, Hair,
Laths, Lime, &c., &c.

1869.

Telegrams :
"Cement, Chester."

Telephone No. 85 Nat.

Roofing Felt, Concrete Flags,
Cattle Troughs, Field Drain Pipes,
Spar Gravel, Garden Tiles, Slate
Slabs and Cisterns, &c., &c.

PLUMBERS' SANITARY WARE.

Prices on application.

Trucks sent anywhere.

Brickworks : PIPER'S ASH and TARVIN ROAD,

Office & Stores : **Cowlane Bridge, Chester.**

Established

H. F. THOMAS (Late LAMONT & SON),

Eastgate Street, CHESTER,

*** House and Estate Agents, ***

. . Valuers to the Court of Probate, . .

Upholsterers, + Cabinet + Manufacturers,

*** CARPET . FACTORS, . DECORATORS. ***

LARGE WAREHOUSES FOR STORING FURNITURE.

LARGE FURNITURE VANS FOR REMOVALS.

BRICK WORKS :
GILDEN SUTTON
AND
TARVIN BRIDGE.

Telephone 81.

57, UPPER NORTHGATE STREET,
CHESTER.

WILLIAM VERNON & SON,

ESTABLISHED 1866.

Builders, Contractors,

DECORATORS, PAPERHANGERS, &c.

MANUFACTURERS OF BUILDING BRICKS, &c.

Dealers in all kinds of Building Materials.

Grange School, ~ HESWALL.

— STAFF: —

Head Master—W. F. ROOKE, M.A. (Classical honours: Classical Exhibitioner of Worcester College, Oxford; late Assistant Master at Bury St. Edmunds' School, and at Newton Abbot College, S. Devon).

Assistant Master—A. G. PAGETT, Esq., Trin. Coll., Dublin.

A lady assists with the junior pupils.

THE object of the School is to prepare Boys for entrance to the Public Schools, and for Professional and Business Life.

RECREATION.—The Playground (about 1½ acres) is about 'Two Minutes' walk from the School. The games are personally superintended by MR. ROOKE or a responsible assistant.

MRS. ROOKE attends to the Home Comforts of the Boys.

TERMS MODERATE. PROSPECTUS ON APPLICATION.

Heswall is considered the healthiest locality of Cheshire.

R. W. NEWCOMBE (*Associate of Institute of
British Decorators*)
(Late of MAPLE & CO., LONDON).



**Decorative House, Church
AND
Theatre Painter,**

HOYLAKES.

SPÉCIALITÉ:—High-Class Artistic Painting in every Classic and Continental Style, on Canvas or Door Panels, Ceilings, Friezes, &c.

ALL KINDS OF RELIEF DECORATIONS, EMBOSSED FRENCH HANGINGS, HAND-PAINTED AND STENCILLED FABRICS, &c.,
FOR DECORATIVE PURPOSES.

23

ESTIMATES AND SKETCHES SUBMITTED.

SIMON LINEKAR,

Builder and Contractor,

AND . . .

UNDERTAKER.

FUNERALS COMPLETELY
FURNISHED.

Residence: 20, ALDERLEY ROAD; Workshop: GROVE ROAD,

*** HOYLAKES. ***

S. & W. BERISFORD,

44 and 46, Mill Street, Macclesfield.



WHOLESALE DEALERS, CONSIGNEES AND SHIPPERS OF

FOREIGN WINES & SPIRITS.

Agents for Burton Ales and Stout, Champagne, Aerated Waters, &c. (See Special Retail List).

WHOLESALE GROCERS, Importers of Dried Fruit, Tinned Goods and General Produce.

TEA AND COFFEE MERCHANTS, SUGAR DEALERS, PROVISION MERCHANTS.

IMPORTERS of the Finest Havana and Continental CIGARS.

Proprietors of

TOKO Scotch Whiskey, DOUNIE Scotch Whiskey, TASALAR Irish Whiskey, BULA Specialities.

TELEGRAMS—

"SUGAR," MACCLESFIELD.

ESTB.



1850.

TELEPHONE NUMBER

44.

CHES.

b 2

ESTABLISHED 1836.

Telegrams: "IRON, MACCLESFIELD."

BENJAMIN HARLOW & SONS,

ENGINEERS & IRONFOUNDERS,

MACCLESFIELD;

AND 30, PARK LANE, LIVERPOOL, •

PATENTEES OF HEATING APPARATUS FOR
CHURCHES, CHAPELS, SCHOOLS, GREEN-
HOUSES, &c.PATENTEES FOR IMPROVEMENT IN JOINTING
PIPES FOR HOT WATER, STEAM, GAS, &c.

STEEL, WROUGHT AND CAST IRON BOILERS.

RADIATORS OF LATEST DESIGNS.

*Fifteen Medals awarded for Improvements in Hot Water Heating Apparatus and Pipe Joints.**Prize Medal and Honourable Mention Paris Exhibition 1878.*SILVER MEDAL HEATING AND VENTILATING
EXHIBITION, CASSEL, PRUSSIA, 1877.SILVER MEDAL BUILDING TRADES' EXHIBITION,
MANCHESTER, 1896.

ESTABLISHED HALF A CENTURY.

GEO. ROYLANCE & CO., LTD.,

CONTRACTORS TO
H.M. OFFICE OF WORKS.

WATERS GREEN, MACCLESFIELD.

JOINERS,
BUILDERS,
WHEELWRIGHTS,
AND SMITHS.

Builders' Merchants.

The largest and most varied stock in the district.

Steam Sawing by horizontal, circular and band Saws.
Machine Planing and Moulding.

Dealers in English and Foreign Timber.

Closets, Drain Pipes, Sinks, and various kinds of
Sanitary Drain Pipes.Blue and Red Bricks, Chimney Pipes, Slates, Cement,
Plaster, and Lias Lime.A variety of Kitchen Ranges, slow Combustion Grates,
Mantel Pieces and Tile Hearths.Specialists in Fire-place Construction, Sanitary Work,
and Inspection of House Drains.

Stone Sawing by Steam Power.

MONUMENTAL MASONS.

*Designs submitted.**Funerals undertaken.*

SWANWICK & STONELEY,

9 and 17, Market Place, Macclesfield.

Merchants' Tailors, Ladies' Costumiers and Habit Makers.

THE NOTED LIVERY HOUSE IN THE NORTH OF ENGLAND.

We desire most respectfully to draw especial attention to our Ladies' Department, and invite ladies to call or send and inspect our choice selection of patterns. We are now devoting special care to this increasing business, and can with every confidence solicit your patronage.

Funeral Department. This Department still continues under the control and management of Mr. Stoneley. He having had over 30 years' experience in this important branch, has thereby gained a high reputation, economy being strongly recommended.

Agents for DR. JAEGER'S WOOLLEN CLOTHING.

Agents for CHRISTY'S NOTED HATS.

JOSEPH WESTWOOD,
 15 & 17, King Edward Street, **MACCLESFIELD;**
Show Rooms—11, KING EDWARD STREET.

Plumber, Glazier and Gas Fitter.

SPECIALITIES:

Sanitary Plumbing and Draining Work. Electric Bells and Telephones Fixed and Repaired.
 Sanitary Inspection of House Drains, &c.
 Gas Lighting with most improved Systems.
 Heating by Gas, Hot Water, or Steam.
 Mill Furnishing.

ESTIMATES ON APPLICATION.

Registered Master Plumber, London. Honours Certificate, City and Guilds.

Telegraphic Address: "CHEESE, MACCLESFIELD."

CLOVERS, PERENNIAL AND ITALIAN RYE GRASSES.

Guaranteed Germination.

Treble Machine Cleaned.

PEDIGREE TURNIP

AND
**MANGEL
 SEEDS.**

WOOD & SONS,
Seed Growers, Merchants and Farmers.

CEREALS,
 OATS, WHEAT,
 BARLEY, RYE, VETCHES.

All Leading Varieties.

Boro' Seed Warehouse, MACCLESFIELD.

ESTABLISHED 1826.

NATIONAL TELEPHONE: 0179.

WRIGHT & HALL,
 23, † MILL † STREET, † MACCLESFIELD,
 Wholesale and
 . . Family . . **Wine and Spirit Merchants.**

SOLE PROPRIETORS OF . . **DUPRES & FILS' CHAMPAGNE,**
 AND THE CELEBRATED . . .

GLEN TULLICH AND GLENLAGGAN SCOTCH WHISKIES
 (Matured and Mellowed by Age only).

DEALERS AND BOTTLERS OF INVALID STOUT, BURTON ALES, &c.
 IMPORTERS OF THE FINEST HAVANA AND CONTINENTAL CIGARS.

— PRICE LIST UPON APPLICATION. —

DAVID HARKES & CO.,
Engineers and Agricultural Implement Makers,
Wheelwrights, Lurry Builders, &c.,
 — AND —
CYCLE & MOTOR AGENTS & REPAIRERS,
MACHINISTS AND IRONFOUNDERS, &c.

ESTABLISHED OVER 60 YEARS.

 (Proprietor, WILLIAM BRETT.)

Works: *MERE, near KNUTSFORD, CHESHIRE.*

WATER CLOSETS,
PUMPS AND
PLUMBERS' WORK
OF EVERY
DESCRIPTION.

HOT-WATER
SERVICES & BATHS
FITTED UP.

WATER LAID ON.

ALL KINDS OF
STONE SUPPLIED.
AND FIXED.

BIRCHALL BROTHERS,
Builders & Contractors,
PLUMBERS,
PAINTERS, GLAZIERS & GASFITTERS, &c.

Some of the Buildings recently erected by the Firm:—

New Farm and Outbuilding for Col. C. H. FRANCE-HAYHURST.
 Residence and Stabling for Mr. R. WALMSLEY, MIDDLEWICH.
 New Premises, Stabling and Fire Station for the
 MIDDLEWICH URBAN DISTRICT COUNCIL.
 NEW POST OFFICE, MIDDLEWICH.
 RED LION HOTEL, MIDDLEWICH.
 FOX INN, HASLINGTON.
 NEW WATER WORKS, MIDDLEWICH.

MIDDLEWICH, CHESHIRE.

BRICKWORK AND
PLASTERING IN
ALL ITS BRANCHES.

ESTIMATES GIVEN
FOR ALTERATIONS,
GENERAL REPAIRS,
AND ALL KINDS OF
CARPENTERING &
JOINERY.

EVERY
DESCRIPTION OF
FENCING SUPPLIED
AND FIXED.

ORDERS
PUNCTUALLY
ATTENDED TO.

Sale Grammar School.

Head Master: A. F. ECKERSLEY, B.A. London.

Boys are prepared for the Universities and for all Public Examinations.

HEALTHY SITUATION. GOOD PLAYING FIELDS.

Terms for Boarders, from 14 to 16 guineas per Term.

For Prospectus apply THE HEAD MASTER,

 **Marringhurst, Brooklands.**

WILLIAM HARVEY,
PRIZE MEDAL SADDLER,
Collar and Harness Maker,
102, Heaton Lane, STOCKPORT.

Horse Clothing, Riding Saddles, &c., &c. Gladstone Bags, Kit Bags,
 Ladies' Bags, Ladies' and Gents' Purses. Footballs.

 **GOLD AND SILVER MEDALS AWARDED FOR CARRIAGE HARNESS.**

J. W. TOMLINSON,
STOCKPORT.

- LIME. -

Cement. Plaster. English and Foreign
 Laths, &c.

- SLATES. -

Facing Bricks. Granite Chippings. Staffordshire Blue Goods.
 &c., &c.

Hoscote School,
... WEST KIRBY, CHESHIRE.

BOARDING & DAY SCHOOL FOR BOYS
 (AT MODERATE FEES).

Principals: J. D. MORPHET (Lond. Univ.), and MARC CEPPI (of Geneva).

Pupils are prepared for the University Local, Naval, and various Professional Examinations.
 The teaching of Modern Languages by the Conversational method is a special feature
 of the School.

Large Playing Field adjoining the School. Gymnastics, Swimming, etc.

 *For Prospectus apply to the Principals.*

— THE —
CHESHIRE & LANCASHIRE SOAP MANUFACTURING CO., LIM.,
 — Makers of all kinds of —

HOUSEHOLD SOAPS
IN BARS AND TABLETS.

Specialities— **“Weaver Washer”**
 AND
“Weaver Carbolic.”

REFINED TOILET SOAPS manufactured by the latest improved methods and machinery.

WORKS: WINSFORD, CHESHIRE.

Exors of **EDMUND LEIGH,**
WINSFORD, CHESHIRE.

BUILDERS' MERCHANTS.

Dealers in (and have always on hand) best **BUXTON LIME**, Bangor and other Slates, Staffordshire Tiles, Bricks, &c.; Sewerage Pipes, and all kinds of Sanitary Ware; Fire Clay Goods of all descriptions; Chimney Tops, Cements, Plaster of Paris, Laths, Plasterers' Hair, &c., &c. Lime and Coal delivered in waggon loads to any station.

SALT DISTRIBUTORS.

Salt of every description delivered by water and rail. Orders promptly attended to.

WINSFORD, CHESHIRE.

**Art Cabinet Makers,
 Upholsterers,
 Decorators,
 . AND .
 COMPLETE HOUSE
 FURNISHERS,**

W. J. CREWDSON'S

Osborne House,
 Stamford New Road
 (Opposite New Post Office),
ALTRINCHAM,
 NR. MANCHESTER.

*Designers of Fitments, Cosy Corners, &c.
 Designs and Estimates submitted.*

Telegrams: "Crewdson's,
 Upholsterers, Altrincham."

Telephone
 0265.

Postal Address: Stamford New Road, Altrincham.


ALTRINCHAM AND CHEADLE.

SHELDON BROS.,
**Stone & Monumental
 Masons
 AND CONTRACTORS.**

Jobbing promptly attended to.

**Die Sinking and Relief Stamping
in all Branches.**

CECIL F. SUGGETT,

 **Artistic and Heraldic
Stationer, . . .**

STAMFORD NEW ROAD, ALTRINCHAM.

A Large Selection of Leather Goods and Fancy
Articles suitable for Wedding, Birthday
and Christmas Gifts.

NOTE HEADINGS.

VISITING CARDS.

PRINTING DONE ON THE PREMISES.

SYERS & NEPHEW,

**Accountants,
Estate Agents and Valuers.**

RENTS AND ACCOUNTS COLLECTED.

*11, Stamford Street,
Altrincham.*

WILLIAM VALLÂCK,

*** *Court Dressmaker,*
Milliner & Ladies' Tailor,**

STAMFORD NEW ROAD,

ALTRINCHAM

(Late THE DOWNS).

THE Latest Novelties and most Select Styles
for Tea Gowns, Dinner Dresses, Evening
Toilettes, Day Gowns, etc., etc.

Sole Maker and Patentee of . . .

"THE VALLÂCK" PATENT CYCLING SKIRT.

Closed on Saturdays at 2 p.m.

Victoria Buildings,
Stamford New Road,

ALTRINCHAM.

A. WHITEHEAD,

 **Milliner.**

Flowers, Straws, Feathers, Laces, &c.

Bowdon Hydro Ltd.,

 **Bowdon, Cheshire.**

EXCELLENT SITUATION.

* * * * *

Turkish, Massage and all Hydropathic
Treatment.

* * Every Comfort. * *

Lawn Tennis, Croquet, Ping Pong, &c., &c.

* Good Private Rooms. *

Very Easy Distance to Manchester.

Terms Moderate. Apply Manager. Tel. 0207.

N. SCOTT,

Optician,

Market Street,

ALTRINCHAM.

H. A. CLEGG,

Brook Street,

CHESTER.

MEMORIALS

IN

Granite, Marble and Stone.

Designs and Estimates on application.

HART DAVIES & SON,

Tailors,

HATTERS,

HOSIERS

And SHIRT MAKERS.

Eastgate Row,

CHESTER.

ESTABLISHED 1866.

Scotch Shooting Hose.

Scotch Golfing Hose.

Scotch Cycling Hose.

Plain and Fancy Tops.

J. DUTTON,

TAILOR, DRAPER,

Hatter, Hosiery,

47, Bridge Street Row, CHESTER.

FUNERALS FURNISHED.

ESTABLISHED 1875.

HERBERT ELLIS,

"Cestrian"

PIANOFORTE WAREHOUSE.

SPECIALITY—

First-class Tuning and Repairs.

NORTH WALES AND CHESHIRE VISITED PERIODICALLY.

Tunings contracted for by the year.

ESTIMATES FREE.

71, Foregate Street, CHESTER.

COAL, LIME,

GRAVEL,

Sleepers,

Limestone,

MACADAM,

&c., &c.

ROBT. W. KILLON.

Telephone
70.

**A1, Coal Exchange,
CHESTER.**

JOHN A. LYON,

Auctioneer,

Practical Land Surveyor, and Valuer.

AGENT FOR THE LINEN HALL ESTATE.

28 years' experience in Sale and Valuation of every description of Property.

*Valuer for Hotel and Inn Change of Tenancy,
Probate, Succession Duty, &c.*

SALES CONDUCTED.

Cash Settlements with Vendors at the close of Sale.

Offices:

11, St. Werburgh St. and Linen Hall, Chester.

McLELLAN BROS. | THOS. WOOD & SON



Builders

AND

Contractors,

COW LANE BRIDGE,

CHESTER.

TELEPHONE 224.

Telephone No. 124. . .

JOHN MAYERS & SON,

GENERAL

BUILDING CONTRACTORS.

CONTRACTORS TO HIS MAJESTY'S GOVERNMENT.

Works executed under various Architects include—

Churches, Banks, Hotels, Municipal Buildings, Schools, Business Premises, Private Residences, etc.

SPECIALITIES:—Bank and Shop Fittings; Wood Block Flooring, Oak Gates and Fencing, etc., Sanitary Work.

OFFICE AND WORKS:

Canal Side, Queen St., CHESTER.

R. G. SHAW & COY.

SUCCESSORS TO

J. G. SHAW & SONS,

— ESTABLISHED 1818, —

Furnishing and General . . .

IRONMONGERS & CUTLERS,

6, Bridge Street, The Cross,

CHESTER.

Telephone No. 250.

(By



Appointment),

Ironmongers,

Manufacturers of

Kitchen Ranges, &c.,

BRIDGE STREET,

Telephone No. 16. + **CHESTER.**

Tinwald House,

HESWALL.

DAY AND BOARDING SCHOOL

FOR THE

Daughters of Gentlemen.

Principal = - MISS BUTCHER.

INSTRUCTION in Religious Knowledge, English Language, Composition, Literature, Hygiene; Science, Ancient and Modern; History, Arithmetic, Algebra, Euclid, Political Economy, Music Theory, French and Latin.

PUPILS prepared for the University Local Examinations.

HESWALL is considered one of healthiest and most picturesque parts of Cheshire. 21

**Portland House
Printing Works Co.,**

HIRST, NEAR MORPETH.

Printers, Bookbinders, Booksellers,
Wholesale and Retail Stationers, and
Newsagents.

COLLIERY PRINTING and STATIONERY
a Speciality.

*Every description of Printing attended to with
care and dispatch.*

ESTIMATES FREE ON APPLICATION TO THE
MANAGER.

JESSE BIRD,
80, MARKET STREET,
HOYLAKE,
Carrier and Furniture Remover,

BY ROAD OR RAIL.

Warehouse
Specially
Built for
Storing
Furniture,
WOOD
STREET.



ESTIMATES FREE.

Also Team Owner and Contractor.

W. H. DAVIES,
High-Class Tailor.



Ladies' Tailoring
a Speciality.

Sole Agent for the

"WINDSOR" TROUSER-BREECHES,

A Garment invented for Golfing, Cycling and all Outdoor Pastimes.

18, Market Street,

→ **HOYLAKE.**

Telephone 162.

F. B. HOGARTH,

Cabinet Maker,

Upholsterer

AND

GENERAL FURNISHER.

3, Quadrant,

HOYLAKE.

Special attention given to Fittings and
Upholstery of every description.

L. LINDFIELD,

Builder and

Contractor,

43, Ferndale Road,

HOYLAKE.

JOHN G. SHAYLER,
Painter, Decorator

AND

PAPERHANGER,

Authorised Plumber and Gasfitter;

OFFICES AND WORKSHOP:

88, Market Street;

RESIDENCE:

13, AIRLIE ROAD, HOYLAKE.

General Repairer to Property.

Estimates Given. Latest Designs in Wall Papers.

ESTABLISHED 1874.

21

W. E. HORROCKS, M.P.S.

(From MOTTERSHEAD & CO., MANCHESTER),

. . . Late P. H. & W. JACKSON, . . .

DISPENSING . AND . PHOTOGRAPHIC
CHEMIST,

King Street, KNUTSFORD.

ENGLISH AND FOREIGN PRESCRIPTIONS dispensed with
the utmost accuracy, and promptly sent to all parts of Knutsford
and District.

Preparations and Requisites of all kinds for the
Nursery, Sick Room, and Toilet.

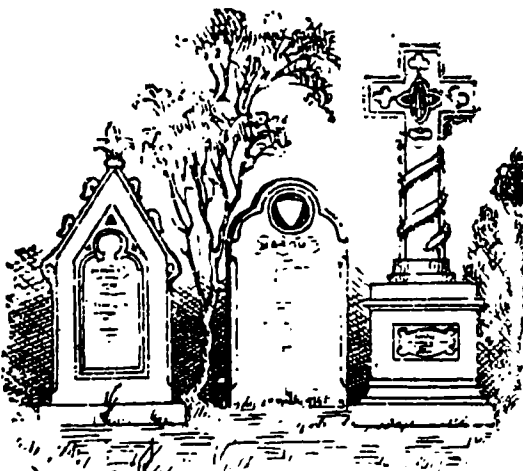
ANALYTICAL LABORATORY, for the Analysis of Milk,
Water, Food, etc.

HORSE AND CATTLE MEDICINES of every description
kept in Stock.

Grammar ~ ~ *School,* **KNUTSFORD.**

Head Master - - - F. MARVEL.

PROSPECTUS ON APPLICATION.



Headstones,

Tombs,

Monuments,

EXECUTED IN

Granite, Marble
and Stone,

BY

H. BERRY & SONS,
Builders & Monumental Masons.

LETTERING and POLISHING of all descriptions done by experienced workmen for the Cemetery or any part of the country.

Monumental Works: Hurdsfield Road & Prestbury Road,
MACCLESFIELD.

PARK STREET SAW MILLS,
MACCLESFIELD.

SAMUEL BULL,



*Joiner and Builder
And Contractor.*

DEALER IN
BUILDING MATERIALS.

Plans and Estimates on application.

WILLIAM BOOTH,

Registered Sanitary Plumber,
Gas, Water, and Steam Fitter.

GLAZING IN ALL ITS BRANCHES.

39 & 41, Catherine Street,
MACCLESFIELD.

Pumps, Baths and Lavatories to order.

JOHN CLAYTON,
Joiner, Builder & Contractor,

Dealer in TIMBER, SLATES, CEMENT
and SANITARY GOODS.

Builders' Merchant.

SAWING, PLANING AND MOULDING MILLS.
CONTRACTOR TO H.M. GOVERNMENT.

Honours Certificates in Building Construction,
Carpentry and Joinery, &c.

Works and Office:
SUNDERLAND ST., MACCLESFIELD.

B. COOKE,
Joiner, Builder
And Contractor,
BUXTON ROAD, MACCLESFIELD.

PLANS AND ESTIMATES.



DEALER IN ALL KINDS OF BUILDING
MATERIALS.

Macclesfield Monumental Works.

A. FRITH

(LATE OF MACCLESFIELD CEMETERY),

With a very large experience in the Monumental business, is prepared to execute orders for all kinds of

**MONUMENTS, TOMBS, HEADSTONES,
TABLETS, &c.,**

IN GRANITE, MARBLE, OR STONE.

LETTERING AND STONE CUTTING.

Designs supplied, or Architects' own designs correctly carried out.

Competent Carvers and Letterers sent
to all parts of the Country.**CHESTERGATE** (OFFICES :
CATHERINE STREET,) **MACCLESFIELD.**

— STEAM SAW MILLS. —

E. & A. FRITH,**JOINERS AND BUILDERS,**

Also Dealers in every description of

BUILDING MATERIALS.English and Foreign Timber, Bricks and Tiles, Slates, Lime
Cement and Plaster, Stone, Flags, and Drain and
Sanitary Pipes.Moulding, Steam Sawing and Planing in general
to the Trade.**QUOTATIONS FREE.**

Goods forwarded to any part of the country.

Catherine Street,**MACCLESFIELD.****GORTON & WILSON,** **Builders, and
Contractors.****ALL KINDS OF BUILDING MATERIALS.****STEAM SAW MILLS,****Elizabeth Street, The Dams,** **MACCLESFIELD.****PLANS AND ESTIMATES.****FRANK STANWAY,**

Great King Street Carriage Works,

MACCLESFIELD.Medal awarded for Workmanship at the Colonial
and Indian Exhibition, 1886.Certificate of Merit, Adlington Show, August 3rd.
1898.

Silver Medal, Cheshire Show, September, 1898.

Certificate of Merit, Adlington Show, 1900-1901.

 WHICH PROVES OUR WORK IS GOOD.**Estimates for Repairs.****CARRIAGES**of every description are Made to Order, and Old Carriages
Bought and Sold on Commission. 2**JOSEPH WELLINGS,** **Joiner, Builder,
and Contractor,****DERBY STREET, MACCLESFIELD.**

Dealer in Timber, Sanitary Goods, Cement.

*Draining and Ventilating Work.***FUNERAL FURNISHER & UNDERTAKER.**

Estimates for New Work, Alterations, &c.

Agent for VENTILATING and SANITARY APPLIANCES.

Drains Tested by Smoke Appliance.

Westbrook, Macclesfield.**KING EDWARD VI. SCHOOL.****THE REV. DARWIN WILMOT, M.A.**

(Formerly Assistant Master at Marlborough and Rossall),

Receives a limited number of BOARDERS AT
WESTBROOK, well situated in large grounds away
from the town.A large Commercial School on the Foundation
supplies most of the educational wants of the
"Town boys." New class-rooms, gymnasium,
laboratory, sanatorium and good cricket ground.
Annual Exhibitions to the Universities.Prospectus, references and list of recent honours on
application.

A. R. BOSTOCK,



Watchmaker,



Jeweller

And . . . OPTICIAN,

BULL . RING.

NORTHWICH.

ESTABLISHED 1855.

J. ARTHUR BOSTOCK,



**Builder and
Contractor,**

London Road Saw Mill,

LEFTWICH, NORTHWICH.

PRIVATE ADDRESS—97, LONDON ROAD.

J. GUDGEON,

87, Witton Street,

NORTHWICH.

WHOLESALE AND RETAIL

CYCLE FACTOR & RUBBER MERCHANT.

Maker of the "Adelaide" Cycle.

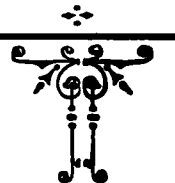
CHEAPEST HOUSE in the Trade
for Cycle Accessories of every
description. Write for our Wholesale
Lists, which will compare favour-
ably with other factors' prices.

. . . **LARGE STOCKS KEPT.** . . .

Central Steam Saw Mills,
NORTHWICH.

J. RAVENSCROFT,

Contractor,



Wheelwright,

AND

Timber Merchant.

FUNERALS COMPLETELY FURNISHED.

TELEPHONE No. 46.

H. Rawcliffe & Sons,



**Painters and
Decorators,**

SANITARY PLUMBERS.

21, Northenden Road,

SALE.

WILLIAM BERRY,

(Successor to **A. WATTS & CO.**),

18, Great Underbank,

STOCKPORT.

BEST CLASS HOUSEHOLD GOODS,

AND .

Gents'.
and Boys' **Complete Outfitter.**

FUNERALS FURNISHED,

Under the personal supervision of Mr. WILLIAM BERRY.

Postal and Telegraphic Address:—
"BRADY & SON" in full.

National Telephones: Stockport, No. 132.
Manchester, 08979.

BRADY & SON, F.S.I., F.A.I.,
Auctioneers,
Surveyors, Valuers, &c.,
17, WARREN STREET,
STOCKPORT.

Established 1844.

And at 78, CROSS STREET,
* * * MANCHESTER.

GEO. R. BRADY,
Auctioneer
*
and Valuer,
69, ST. PETERSGATE,
STOCKPORT,
— AND —
. WHALEY BRIDGE. .

MERSEY PUBLIC SAW MILLS,
Heaton Lane, Stockport.

Telephone, National No. 0994.

ADAM GOTHARD,
Timber Merchant & Builder.

Dealer in
Chimney Pots, Sanitary Pipes, Fire Bricks, Cement,
Plaster, Laths, Hair, &c., &c.

PACKING CASE MAKER.

STOCKPORT.

Auctioneers

AND

Valuers.

HOPWOOD AND BATEMAN.

Nat. Tel.

Nos. 123 and 125.

3, Warren Street,

AND

28, St. Peter's Gate.

National Telephone 203.

PHILIP H. LANG,
Incorporated Accountant,
Auctioneer, Valuer,

ESTATE & INSURANCE AGENT.



1a, Warren Street,
STOCKPORT.

W. LOOSE & CO.,
Stockport Corn Mills,
HEATON LANE,
STOCKPORT;

Telephone No. 231.

AND

Crown Bakery, . .

BRINKSWAY.

JAMES MACE,

Timber, Slate, Tile, Cement,

AND

Sanitary Pipe Merchant,

145, WELLINGTON ROAD SOUTH;

SAWING & PLANING MILLS,

Charlesworth Street,

 **STOCKPORT.**

Special Terms for Case and Grate Wood.

MART OF EXCHANGE:

73, Heaton Lane, STOCKPORT.

WM. NEWTON & SONS,

House Furnishers

AND

CABINET MAKERS.

ALSO

CABINET WORKS:

Mart of Exchange:

Jackson Street, HYDE;

HYDE.

AND

Heaton Lane, STOCKPORT.

National Telephone 0983.

JAMES WAGSTAFF,

AUCTIONEER & VALUER,

Estate & Insurance Agent,

7, WARREN STREET, . . .

 **STOCKPORT.**

12

CHES.

TELEPHONE 0243. . .

C. B. BURROWS

(Late of the firm of T. V. BURROWS & SONS, Egremont),

GENERAL CONTRACTOR

— AND —

Painter, Decorator, Sign Writer,

PLUMBER & GASFITTER, &c.,

17, Grange Road, WEST KIRBY.

House Repairs executed in all Branches.

SANITARY WORK A SPECIALITY.

Gas Fittings, Gas Cookers,
Electric Light Fittings, Wall Papers, Paints,
Etc., Etc. 21

BERESFORD ADAMS,

Estate Agent
and Valuer,Valuer for Starr-Bowkett and other
Building Societies.22, NEWGATE STREET,
CHESTER.

High School for Girls,

...  ...

CLIFTON HOUSE,

 **KNUTSFORD.**

Efficient Staff of University Teachers.

. . . BOARDERS RECEIVED.

EXCELLENT EXAM. RESULTS.

C

A. WESTON & CO., PARKINSON & CO.

Carvers in Wood and Stone,

Art Cabinet Makers,

PICTURE FRAME MAKERS, &c.

Old Paintings & Engravings cleaned & restored.

OLD FRAMES re-gilt equal to new.

66, CHESTERGATE, MACCLESFIELD.

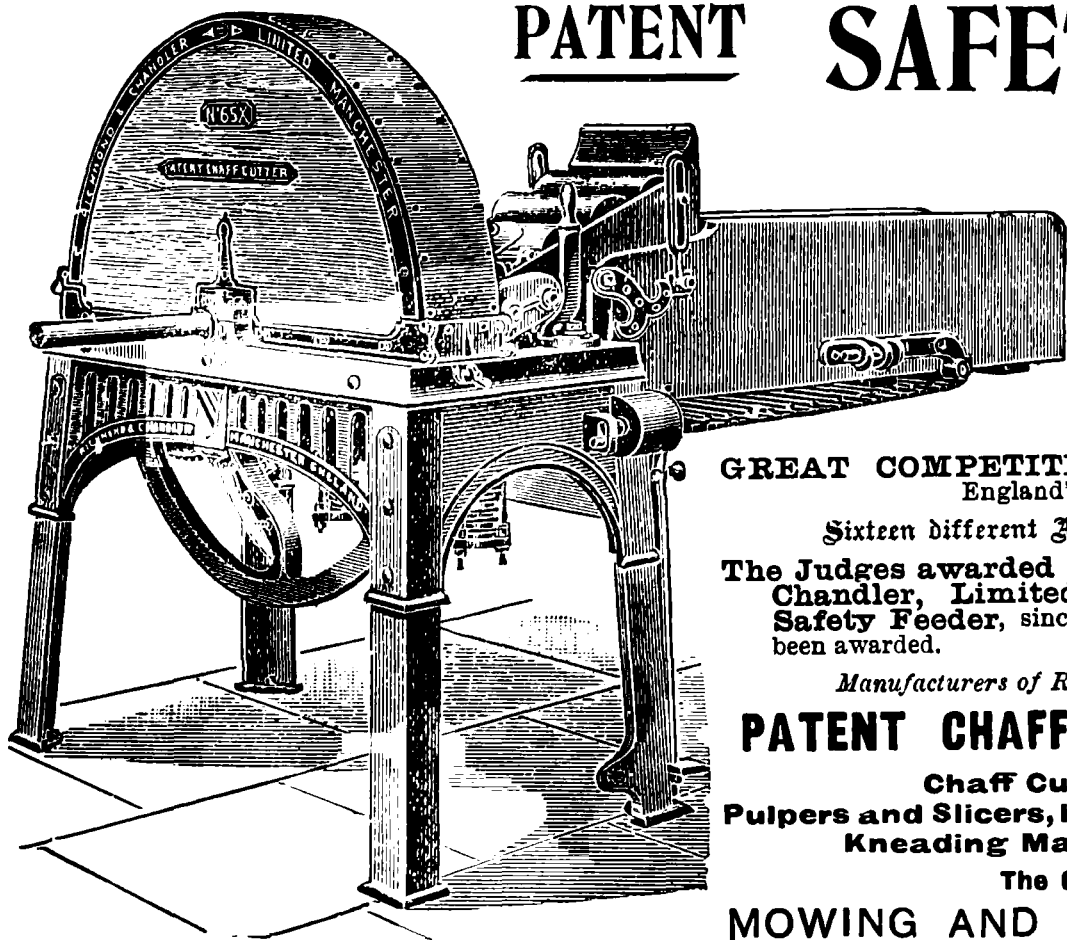
THOMPSTONE BROS., Proprietors.

Mineral Water Manufacturers,

AND

BOTTLERS OF BASS & CO.'S ALES AND
GUINNESS'S STOUT.

Chestergate & Catherine St.,
MACCLESFIELD.



PATENT SAFETY FEEDER CHAFF CUTTERS

TO COMPLY WITH THE NEW
ACT OF PARLIAMENT.

GREAT COMPETITION at the Royal Agricultural Society of
England's Birmingham Show, 1898.

Sixteen different Appliances were tested at the Trials.

The Judges awarded the PRIZE of £10 to Richmond &
Chandler, Limited, for their "Multiplex" Patent
Safety Feeder, since improved; and numerous other Prizes have
been awarded.

Manufacturers of Royal First Prize and Exhibition Medal

PATENT CHAFF SIFTER AND CLEANER.

Chaff Cutters, Corn Crushers,
Pulpers and Slicers, Horse Gears, Steaming Apparatus.
Kneading Machines, Oil Cake Breakers.

The Celebrated "BRITON"

MOWING AND REAPING MACHINES, &c.

.. SEND FOR LIST TO ..

RICHMOND & CHANDLER, LTD., MANCHESTER.

Richmond & Chandler's Chaff Cutters have taken the PRIZE of the ROYAL AGRICULTURAL SOCIETY OF ENGLAND
at every competition since 1854. [25]

List of Maps Published by Kelly's Directories Limited.

					In Case.	On Rollers.	Plain Sheet.
LONDON	10/0 (with Index)	10/0 (with Index)	3/6
SUBURBAN	5/0	4/0	2/0
ESSEX, HERTS, MIDDLESEX, KENT, SURREY	}	5/0	4/0	2/0
AND SUSSEX, each		5/0	4/0	2/0
BUCKS AND OXFORDSHIRE (in one)	5/0	4/0	2/0
BERKSHIRE	5/0	4/0	2/0
LIVERPOOL	—	—	2/0
MANCHESTER	—	—	2/0
BRISTOL	—	—	1/0
BIRMINGHAM	—	—	1/0
SHEFFIELD	—	—	1/0
LEEDS	—	—	1/0
NEWCASTLE-ON-TYNE	—	—	1/0

Post Office Directory Offices, 182, 183 & 184, High Holborn, London, W.C

Greenwood & Batley,

LIMITED.

ALBION WORKS, LEEDS.

MACHINE TOOL DEPARTMENT.—Every description of General and Special Machine Tools for Railway, Marine, and General Engineers. Bolt, Nut, and Screw Machinery. Wood Working Machinery.

SPECIAL PLANTS OF MACHINERY for making Armour Plates, and all kinds of Ordnance ; also for Small Arms Cartridges, and every description of War Material, Coining Presses and Minting Machinery.

OIL MILL MACHINERY DEPARTMENT.—The “Albion,” “Leeds,” and Anglo-American systems for extraction of every kind of Vegetable Oil. Presses for making Cattle Feeding Cakes, Seed and Grain Elevators and Warehousing Machinery. Oil Refineries. Cotton and other Baling Presses.

TEXTILE MACHINERY DEPARTMENT.—Improved Patented Machines for Preparing and Spinning Waste Silk, China Grass, Rhea, Ramie, and other fibres.

ELECTRICAL DEPARTMENT.—All kinds of Dynamos and Motors for Lighting or Transmission of Power. Speciality : Motors for electrically-driven Machine Tools, &c.

TURBINE DEPARTMENT.—De Laval's Patent Steam Turbine Motors, Turbine Dynamos, Turbine Pumps and Fans (for Great Britain and Colonies, China, Japan and Egypt).

ORDNANCE DEPARTMENT.—Manufacturers of Military Small Arms Ammunition. Self-propelling Torpedoes (Whitehead's) for the Navy.

SEWING MACHINE DEPARTMENT.—Patent Boot Sewing Machines. Cloth Cutting Machines for Wholesale Clothiers, &c.

All the above Machinery is made either with Motors for direct Electrical Driving, or ordinary Belt Driving.

London Office : **16, GREAT GEORGE STREET,
WESTMINSTER, S.W.**

CABLE ADDRESSES—“GREENWOOD, LEEDS,” “OUTFLANK, LONDON.”
A B C, A 1, AND ENGINEERING CODE.

GUEST AND CHRIMES,

Foundry and Brass Works, Rotherham,
AND
132, SOUTHWARK STREET, LONDON, S.E.
PRIZE MEDALS.



1851.



52A.—WATER CLOSET AND FIRE COCK.



1862.

AWARDED.

Class 8.—FOR WATER METER, &c., SIEMENS'.

"PRACTICAL SUCCESS OF WATER METERS, &c.;
ORIGINALITY OF THE WHOLE."

1862.

AWARDED.

Class 31.—FOR WATER WORKS ARTICLES.

"PROGRESS IN FABRICATION OF USEFUL ARTICLES
FOR THE DISTRIBUTION OF WATER IN TOWNS."

Agents at Hamburg:—Messrs. ALFRED BARBER and Co.

Agent at Brussels:—Mr. EDMOND LAMAL.

BATEMAN & MOORE'S & CHRIMES' PATENT HYDRANTS OR FIRE COCKS.
Single and Double Air Valves.

GUEST & CHRIMES' IMPROVED SLUICE COCKS, for Water, Steam, Sewage and Gas
(The body being cast in one piece).

SIEMENS & ADAMSON'S PATENT WATER METER.

Chrimes' Patent High Pressure Loose Valve Screw-down Cocks.

(Of the whole of the above G. & C. were the Original Manufacturers and Sole Licensees).

RESERVOIR VALVES OF ALL DESCRIPTIONS.

REFLUX, RELIEF, AND PRESSURE REDUCING VALVES

CATHELS & TERRACE'S PATENT FOUR-WAY DISC GAS VALVES.

CATHELS' PATENT DISTRICT DRY GAS GOVERNOR.

PATENT FEED REGULATING COCK.

Waste-Preventing Single and Double Valve Service Boxes.

IMPROVED SELF-ACTING & PULL WATER CLOSET.

PEARSON'S PATENT LOCKING APPARATUS FOR BATH SUPPLY FITTINGS.

LOWE'S PATENT EFFLUVIA TRAPS, BEGGS' IMPROVED. NEWTON'S PATENT STREET GULLY.

F. SIEMENS' PATENT REGENERATIVE GAS BURNERS.

COWAN'S PATENT HIGH POWER GAS LAMPS.

Patent Storm-Proof "ARC" Lamps for Gas. "ARC" Lamps for Incandescent Gas Lighting.

IMPROVED LAMPS OF EVERY DESCRIPTION FOR ACETYLENE GAS.

GAS CHANDELIERS, BRACKETS, AND FITTINGS.

GOLDSMITH'S PATENT SIGHT WATER LINE INDICATING GAS METER. ORDINARY WET AND DRY GAS METERS.

STREET WATERING AND FIRE EXTINGUISHING APPARATUS

Of every description, as HAND or DELIVERY PIPES, JETS, JET and SPREADER to distribute Water in imitation of RAIN;
HOSE COUPLINGS; LEATHER, INDIA RUBBER, GUTTA PERCHA, and CANVAS HOSE; COUPLING WRENCHES, &c.,
or any other Article made to order or size.

PLUMBERS' AND GAS FITTERS' BRASSWORK OF EVERY DESCRIPTION.

Drawings, Descriptions, Prices, and Testimonials will be forwarded per Post, on application as above.

ALL THE ABOVE ARTICLES MAY BE SEEN ON APPLICATION TO

GUEST & CHRIMES, BRASS WORKS, ROTHERHAM;
Or to **THOMAS BEGGS & SON, 132, SOUTHWARK STREET, LONDON, S.E.**
Telegram Address:—"GUEST, ROTHERHAM."