

FOUNDED 1710.

SUN

FIRE

OFFICE.

CHIEF OFFICE, —

Threadneedle Street, LONDON, E.C.

BRANCH OFFICES IN
LONDON:

60, Charing Cross, S.W.
332, Oxford Street, W.
40, Chancery Lane, W.C.
42, Mincing Lane, E.C.

Liverpool Branch: 6, CHAPEL STREET.

Manchester Branch: 84 & 86, KING STREET.

Directors:—FREDERICK HENRY NORMAN, Esq., *Chairman.*

CECIL CHAPLIN, Esq.
EDWARD DENT, Esq.
VISCOUNT EMLYN.
THE RT. HON. LORD FABER.
ALFRED FARQUHAR, Esq.
THE HON. WILLIAM HENRY GOSCHEN.
THE MARQUESS OF GRANBY.
EDWARD C. GRENFELL, Esq.
JOHN G. B. T. HILDYARD, Esq.

GEO. E. MEAD, } *Assistant Secretaries.*
JOHN SMITH, }

SIR RICHARD BIDDULPH MARTIN, Bart.
THE HON. ALGERNON H. MILLS.
SIR HUGH C. G. MONTGOMERY, Bart.
LORD HENRY NEVILL.
LAMBERT POLE, Esq.
MARLBOROUGH ROBERT PRYOR, Esq.
THE HON. ARTHUR SAUMAREZ.
THE HON. CHARLES L. SCLATER-BOOTH.
CHARLES A. SCOTT-MURRAY, Esq.

EDWARD BAUMER,
Manager and Secretary.

The SUN FIRE OFFICE is the oldest Insurance Company in the World, and has an experience of **One Hundred and Ninety-six Years**. It insures, against Loss or Damage by Fire, property in Great Britain and Ireland, the Colonies, the United States of America, and most Foreign Countries.

LOSS BY LIGHTNING AND GAS EXPLOSION COVERED BY ALL POLICIES.
PROMPT AND LIBERAL SETTLEMENT OF CLAIMS.

Funds in Hand - - - - £2,788,638.

CHESHIRE.

a

THE LONDON ASSURANCE.

INCORPORATED BY ROYAL CHARTER, A.D. 1720.
FOR FIRE, LIFE, AND MARINE ASSURANCES.

Head Office: No. 7, ROYAL EXCHANGE, LONDON.

Governor, ALFRED CLAYTON COLE, Esq.

Sub-Governor, FREDERIC LUBBOCK, Esq.

Deputy-Governor, WILLIAM THOMAS BRAND, Esq.

DIRECTORS.

CHARLES G. ARBUTHNOT, Esq.
OTO AUGUST BENECKE, Esq.
ROBERT HENRY BENSON, Esq.
ARTHUR HENRY BRANDT, Esq.
C. ALGERNON CAMPBELL, Esq.
COLIN F. CAMPBELL, Esq.
HOWARD GILLIAT, Esq.

HENRY GOSCHEN, Esq.
CHARLES S. S. GUTHRIE, Esq.
GEORGE W. HENDERSON, Esq.
HENRY J. B. KENDALL, Esq.
CURTIS W. LAMPSON, Esq.
RONALD MALCOLM, Esq.
ADML. SIR F. L. MCCLINTOCK, K.C.B.,
F.R.S.

GREVILLE H. PALMER, Esq.
SELWYN R. PRYOR, Esq.
GEORGE ROLPES, Esq.
JOHN M. RYRIE, Esq.
GEORGE W. TALLENTS, Esq.
VINCENT C. VICKERS, Esq.
LEWIS A. WALLACE, Esq.

Secretary.—O. A. DENTON, Esq.

Underwriter.—S. K. DAVIS, Esq.

Manager of the Fire and Life Departments.—JAMES OLUNES, Esq.

Actuary.—A. G. HEMMING, Esq.

The Corporation has granted Fire, Life, and Marine Assurances for nearly Two Hundred years. During that long period it has endeavoured to introduce into its practice all the real improvements that have from time to time been suggested, and to afford every facility for the transaction of business.

INCOME, 1905.

Life Premiums	£174,430 17 8
Fire Premiums	561,603 6 7
Marine Premiums	255,918 12 1
Interest	166,902 12 1
Other Receipts.....	118 8 5
	<u>£1,158,973 16 10</u>

FUNDS, 31st December, 1905.

Shareholders' Capital paid up	£448,275 0 0
General Reserve Fund	500,000 0 0
Life Assurance Funds	2,320,282 14 8
Fire Fund.....	750,000 0 0
Marine Fund	310,000 0 0
Profit and Loss	205,901 4 1
Investments Reserve Account	80,000 0 0
Provision for accrued liabilities	119,263 7 7
	<u>£4,733,722 6 4</u>

Prospectuses and Copies of the Accounts can be had on application.

THE BRITISH ENGINE, BOILER & ELECTRICAL INSURANCE CO. LIMITED,

Late THE ENGINE, BOILER AND EMPLOYERS' LIABILITY INSURANCE CO. LIMITED.

Head Office: 12, King Street, Manchester.

Branches—
 { 49, QUEEN VICTORIA STREET, LONDON, E.C.
 { 65, RENFIELD STREET, GLASGOW.
 { STANDARD CHAMBERS, NEVILLE STREET, NEWCASTLE-ON-TYNE.

Engineer, MICHAEL LONGRIDGE, M.A., M.Inst.C.E., M.Inst.M.E.

Secretary, EDWARD MOSS.

CAPITAL, £250,000.

Inspection and Insurance of Engines, Boilers, Dynamos, Motors, Lifts and Hoists.

All Inspections made by the Trained Staff of the Company. No casual men employed.

Special Advice, with Complete Plans and Specifications, for Steam, Electrical or other Power Plant.

SUPERVISION DURING CONSTRUCTION.

EFFICIENCY TESTS.

Telegraphic Address—"LONGRIDGE, MANCHESTER."

County Fire Office Limited,

No. 50, Regent Street, and No. 14, Cornhill, London.

BRANCH OFFICES.

Belfast—10, VICTORIA STREET.
 Birmingham—59 & 61, COLMORE ROW.
 Bristol—CLARE STREET.
 Canterbury—ST. GEORGE'S STREET.
 Dublin—113, GRAFTON STREET.
 Edinburgh—123, GEORGE STREET.
 Exeter—QUEEN STREET.
 Glasgow—158, ST. VINCENT STREET.
 Leeds—9, EAST PARADE.
 Liverpool—BANK CHAMBERS, 3, COOK STREET.
 Manchester—68, FOUNTAIN STREET.
 Newcastle-on-Tyne—9, GRAINGER STREET WEST.
 Nottingham—EXCHANGE WALK.
 Shrewsbury—12, HIGH STREET.

DIRECTORS.

THE RIGHT HON. LORD KINNAIRD, *Chairman.*

MAJOR THE HON. THOMAS WALTER BRAND.
 GEORGE EDWARD COCKRAM, Esq.
 WILLIAM DERRY, Esq.
 THE RIGHT HON. EARL FORTESCUE.

ARTHUR MERVYN JONES, Esq.
 THE HON. KENNETH FITZGERALD KINNAIRD.
 HENRY TEMPLE PEARS, Esq.
 J. H. ETHERINGTON SMITH, Esq.

Secretary, FREDERICK G. REYNOLDS, Esq.

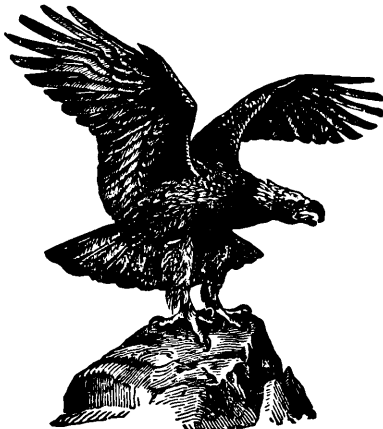
Assistant Secretary, JOSEPH A. ROONEY, Esq.

Eagle Insurance Company.

(LIVES).

ESTABLISHED 1807.

(ANNUITIES).



Head Office:

79, PALL MALL, LONDON, S W
 CITY—41, Threadneedle Street, E.C.

Branches—Eagle Insurance Buildings, in
 BIRMINGHAM, BRISTOL, LEEDS, MANCHESTER

BRANCH OFFICE:

EAGLE INSURANCE BUILDINGS, CROSS STREET, MANCHESTER.

Telegraphic Address: "EAGLET, MANCHESTER." Telephone No. 4709, Centr.

Local Council.

JOSHUA BURY, Esq.
 E. J. CARLLISE, Esq., Solicitor (Messrs. George Hadfield, Bennett & Carlisle).
 GEORGE SPARK CLAYDON, Esq. (of Oltham), Solicitor (Messrs. Wrigley, Claydon & Trustram).
 CHARLES JOHN ERNEST HALL, Esq., Solicitor (Messrs. Hall & Son).
 SIR WM. HY. VAUDREY, J.P., Solr. (Messrs. Vaudrey, Oppenheim & Mellor).

PHILIP SWANWICK & CHARLES NAISMITH, *Managers,*

The Surplus disclosed at the Valuation (1902) produced an average Cash Bonus of 30 per cent. of the Premiums paid during the Quinquennium; being a return of one and a half Premiums.

The Company's **Debenture Policies**, with **Guaranteed Benefits**, afford an attractive form of Insurance in the Non-Participating Class, at very moderate rates.

Apply for 20th Century Prospectus, showing Simple and Liberal Conditions.

LAW REVERSIONARY INTEREST SOCIETY, LIMITED.

ESTABLISHED 1853.

Offices:—Thanet House, 231-232 Strand, London, W.C.

Opposite the Law Courts.

Removed from No. 24 Lincoln's Inn Fields, London, W.C.

CAPITAL STOCK - - £400,000.

DEBENTURE STOCK - - £278,130.

DIRECTORS.

Chairman—CHAS. ROBERT RIVINGTON, Esq., J.P., D.L.
 ERNEST BEVIE, Esq., Devereux Chambers, Temple, W.C.
 The Hon. Mr. JUSTICE CHANNELL.
 JOHN C. DEVERELL, Esq., Fitcham Firs, Dorking.
 Sir HOWARD W. ELPHINSTONE, Bart., Barrister-at-Law.
 J. R. B. GREGORY, Esq., 1 Bedford Row, W.C.

Deputy-Chairman—The Right Hon. J. W. MELLORE, K.C.
 L. W. N. HICKLEY, Esq., 10 King's Bench Walk, E.C.
 ARCHIBALD H. JAMES, Esq., Norfolk House, W.C.
 FREDERICK LEE, Esq., Barrister-at-Law.
 ALDRED WILLIAM BOWDEN, Esq., K.C.
 C. R. B. WEST, Esq., Cheam.

SOLICITORS.

MESSRS. CAPRON & CO., Savile Place, Conduit Street, W.

PURCHASES.—The Society purchases Reversions and Remainders, whether absolute or contingent; Life Interests whether in possession or deferred, and generally all Interests (in approved property) that depend upon the duration of human life.

LOANS.—The Society also grants Loans on the security of such Interests, either on ordinary Mortgage or by way of Reversionary Charge. The latter mode meets the convenience of borrowers who do not wish to make any payment for either principal or interest until their Reversionary Property falls into possession. The amount to which the Society will then be entitled is fixed at the outset, and does not depend on the time elapsing between the grant of the Loan and its repayment. The option of redeeming the Charge during the first three or five years can usually be combined with this form of Loan.

LIFE ANNUITIES are granted by the Society in exchange for Reversions and other Interests, and also in consideration for Reversionary Charges payable when the property falls into possession. In this way a Reversioner can secure a fixed income and avoid the trouble and expense of obtaining successive loans.

The operations of the Society not only enable future expectations to be turned into present cash on fair terms, but contingent interests which may never come into possession at all are also made available for immediate uses.

The Board of Directors meet on Wednesdays at Four o'clock, to consider proposals—forms for which and full information can be obtained at the Society's Offices—but immediate consideration will be given to business where dispatch is of importance.

W. OSCAR NASH, F.I.A., *Actuary and Secretary.*

National Provident Institution.

— FOR —

MUTUAL LIFE ASSURANCE.

—: ESTD. 1835. :-

48, GRACECHURCH STREET, LONDON.

DIRECTORS.

The Hon. VICARY GIBBS, *Chairman.*

Sir JONATHAN E. BACKHOUSE, Bart.
 The Rt. Hon. AUGUSTINE BIRRELL,
 K.C., M.P.
 JOSEPH FELL CHRISTY, Esq.

LEWIS COWARD, Esq., K.C.
 ROBERT E. DICKINSON, Esq.
 HUGH E. HOARE, Esq.
 The Rt. Hon. LORD SANDHURST, G.C.S.I.
 VINCENT W. YORKE, Esq.

ARTHUR SMITHER, Esq.
 Sir PETER SPOKES.
 GEORGE CRISPE WHITELEY, Esq.
 Ald. Sir WALTER H. WILKIN, K.C.M.G.

Medical Officers—T. HENRY GREEN, M.D., F.R.O.P.; RAYMOND CRAWFORD, M.D., F.R.C.P.

Surgeon—THOMAS MIDDLETON MORRIS, Esq.

Auditors—W. C. JACKSON, Esq., F.C.A.; WM. CASH, Esq., F.C.A.; H. F. CLUTTERBUCK, Esq.

Agency Manager—C. I. CROFT.

Assistant Secretary—S. HAZELL.

ASSURANCES AND ANNUITIES OF ALL KINDS—WITH OR WITHOUT PROFITS.

ENDOWMENT ASSURANCE.

Policies are issued combining Life Assurance at minimum cost with Provision for Old Age, and are singularly advantageous.

Write for Leaflet on **NET COST OF ENDOWMENT ASSURANCES.**

L. F. HOVIL, *Actuary and Secretary.*

APPLICATIONS FOR AGENCIES INVITED

NORWICH UNION FIRE INSURANCE SOCIETY

FOUNDED 1797.

HEAD OFFICE: NORWICH.

BRANCH-OFFICES:

MANCHESTER: 73, King Street (*H. D. CURNICK, Manager.*)

LIVERPOOL: 27, Castle Street (*W. H. ANDERSSON, Manager.*)

Losses Paid - - - £19,920,000

Premium Income - - - £1,170,000

LOWEST RATES OF PREMIUM.

PROMPT AND LIBERAL SETTLEMENT OF CLAIMS.

Prospectuses and every information can be obtained at the Chief Offices, Branches and Agencies.

APPLICATIONS FOR AGENCIES INVITED.

PHENIX ASSURANCE COMPANY, LIMITED.

PHENIX FIRE OFFICE,

19, Lombard Street, London, E.C.

ESTABLISHED 1782.

Trustees and Directors.

THE RIGHT HON. LORD AVEBURY, F.R.S., D.C.L., LL.D.
JOSEPH WILLIAM BAXENDALE, Esq.
WALTER BIRD, Esq.
THE HON. STUART PLEYDELL BOUVERIE.
BENSTOW BOVILL, Esq.
RALPH CLUTTON, Esq.
ROBERT KIRKMAN HODGSON, Esq.
JOSEPH FRANCIS LESCHER, Esq.

EDGAR LUBBOOK, Esq.
SIR ARTHUR CHARLES LUOAS, BART.
ADMIRAL CHARLES DAVIS LUOAS, V.O.
THOMAS DOUGLAS MURRAY, Esq.
THE HON. EDWIN PONSONBY.
THE HON. EDWIN B. PORTMAN.
GEORGE GILBERT TREBERNE TREBERNE, Esq.

Auditors—MESSRS. CHATTERIS, NICHOLS & CO.

Manager and Secretary, H. B. GUERNSEY.

Assistant Secretaries { CLEMENT HUTT.
W. A. BOSTON.

BRANCH OFFICES.

West End Office—57, CHARING CROSS, LONDON, S.W.

BIRMINGHAM ... <i>Phoenix Buildings, Colmore Row.</i>	HULL ... <i>Phoenix Chambers, 161 & 162, High St.</i>
BRISTOL ... <i>Phoenix Chambers, Clare Street.</i>	LEEDS ... <i>Phoenix Chambers, South Parade.</i>
CARDIFF ... <i>119, St. Mary Street.</i>	LIVERPOOL ... <i>Phoenix Chambers Exchange.</i>
DUBLIN ... <i>41, Lower Sackville Street.</i>	MANCHESTER ... <i>Phoenix Buildings, 18, Cooper St.</i>
DUNBURG ... <i>25, George Street.</i>	NEWCASTLE-ON-TYNE ... <i>3, St. Nicholas Buildings.</i>
GLASGOW ... <i>121, St. Vincent Street.</i>	PLYMOUTH ... <i>Ola Town Street.</i>

AGENCIES THROUGHOUT THE UNITED KINGDOM AND ABROAD.

Insurances effected against Loss by Fire and Lightning in all parts of the World. Moderate Rates for all Insurances—both ordinary and special. Every Insurable Risk Covered.

THIS COMPANY HAS ALREADY PAID, IN SATISFACTION OF FIRE CLAIMS, MORE THAN

THIRTY MILLIONS STERLING.

Rates and Particulars of Insurance may be obtained at the Chief and Branch Offices, AS ABOVE, and from the respective Agents of the Company.

APPLICATIONS FOR AGENCIES INVITED.

Royal Exchange Assurance,

INCORPORATED A.D. 1720

FIRE, LIFE, SEA,
ACCIDENT,
BURGLARY,
FIDELITY
GUARANTEE,



"Royal Exchange, London." (Head Office.)

EMPLOYERS'
LIABILITY,
ANNUITIES.

The Corporation will act as - - -
EXECUTOR OF WILLS,
TRUSTEE OF WILLS AND
SETTLEMENTS.

Proposals for all classes of Insurance are invited.

APPLICATIONS SHOULD BE MADE TO THE SECRETARY,

Head Office—Royal Exchange, London, E.C.

Or to the Manager, J. PERKINS, 9, Wall Street, Liverpool.

DINNEFORD'S

The Universal Remedy for Acidity of the Stomach,
Headache, Heartburn, Indigestion, Sour Eructations,
Bilious Affections

The Physician's Cure
for Gout, Rheumatic
Gout and Gravel; the
safest and most
gentle Medicine for
regular use



MAGNESIA

Sold everywhere.

N.B.—ASK FOR DINNEFORD'S MAGNESIA.

IRON BUILDINGS & ROOFING

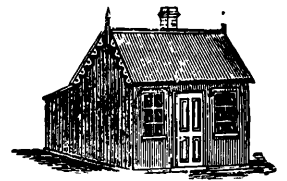
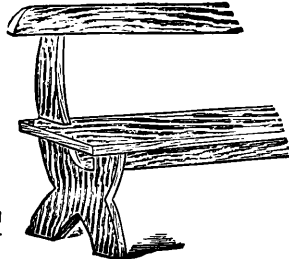
Telegraphic Address:
IRONOMICAL, LONDON.

And every description of JOINERS' WORK.

CHEAPEST HOUSE IN
THE TRADE.



New and Second-hand Churches, Chapels, Misses
and School Rooms, Cottages, Shepherds' and
Keepers' Huts, Stables, Coach-houses, Farm Build-
ings, Sheds for Manufacturing Purposes, &c



several Buildings always on view and 100 tons of
iron kept in stock. Plans and Estimates for every
description of IRON BUILDINGS and ROOFING
free on application.

BUILDINGS SHIPPED AND ERECTED IN ANY PART OF THE WORLD.

W HARBROW'S Works, adjoining South Bermondsey Station, L. B. & S. C. Ry.

And Southwark Park Station, S E. Ry., London, S.E.

Telephones: 46 Altrincham and 46a Hale.

EDWIN WATSON,
 General and **Ironmonger,**
 Furnishing
 AND **CYCLE DEALER.**

Specialist in Repairing and Grinding **LAWN MOWERS,**
 at Extremely Reasonable Charges.

We keep a Big Stock of **GARDEN, JOINERS', CARVERS',**
 and **FRETWORK TOOLS.**

George Street, ALTRINCHAM & Ashley Road, HALE.

Lawn Mowers Ground for the Trade.

C. & A. OKELL, Established
 40 years.
 CENTRAL CABINET WORKS,
52, Stamford New Road, ALTRINCHAM.

Upholsterers, Cabinet Makers & House Furnishers.

FLOORCLOTH, LINOLEUM AND CARPET WAREHOUSE.
 DINING AND DRAWING ROOM SUITES, &c., RE-UPHOLSTERED.
 PROMPT ATTENTION TO REPAIRS AND ALTERATIONS.
 INEXPENSIVE ARTISTIC BEDROOM SUITES A SPECIALITY.

TELEPHONE No. 18x.

WORKS: MOSS LANE.

Closed on Saturdays at 2 p.m.

Victoria Buildings, . .
Stamford New Road,

ALTRINCHAM.

A. WHITEHEAD,
Milliner.

Flowers, Straws, Feathers, Laces, &c.

WILLIAM VALLACK,
Court Milliner, Dressmaker
and Ladies' Tailor,

STAMFORD NEW ROAD,
ALTRINCHAM.

Walking Costumes, Reception Gowns, Dinner and
Evening Dresses

— AT MODERATE CHARGES. —

Patentee of . . .

"THE VALLACK" Motor Coat and Cap combined.

THIS AFFORDS COMPLETE PROTECTION FROM DUST
AND DRAUGHT.

Sale Grammar School.

Head Master: A. F. ECKERSLEY, B.A., London.

Boys are prepared for the Universities and for all Public Examinations.

HEALTHY SITUATION. GOOD PLAYING FIELDS.

Terms for Boarders, from 14 to 16 guineas per Term.

For Prospectus apply THE HEAD MASTER,

Marringhurst, Brooklands.

Contractors' and Builders' Merchant.

➤ **Brick Manufacturer.** ◀

Supplies all kinds of SLATES, BRICKS, QUARRIES,
SANITARY GOODS, &c., &c.

Best Portland Cement.

Plaster of Paris, Lias Lime,
Keene's Cement, Hair,
Laths, Lime, &c., &c.

ROBERT LAMB. 1869.

Telegrams :
"Cement, Chester."

Telephone No. 85 Nat.

Roofing Felt, Concrete Flags,
Cattle Troughs, Field Drain Pipes,
Spar Gravel, Garden Tiles, Slate Slabs
and Cisterns, &c., &c.

PLUMBERS' SANITARY WARE.

Prices on application. Trucks sent anywhere.

Brickworks: PIPER'S ASH and TARVIN ROAD,

Office &
Stores: **Cowlane Bridge, CHESTER.**

Established

H. F. THOMAS (Late LAMONT & SON),

— *Eastgate Street, CHESTER.*

✳ **House and Estate Agents,** ✳

. . Valuers to the Court of Probate, . .

Upholsterers, + Cabinet + Manufacturers,

✳ **CARPET FACTORS, DECORATORS.** ✳

LARGE WAREHOUSES FOR STORING FURNITURE.

LARGE FURNITURE VANS FOR REMOVALS.

By Special



Appointment.

R. BOLLAND & SONS, Chester.

WEDDING CAKES

As supplied to Her late Majesty Queen Victoria for the Wedding of Their Majesties the King and Queen.

ILLUSTRATED CATALOGUES GRATIS ON APPLICATION.

Boxes of Fancy Cakes of every description.

3/6 and 7/- and upwards.
Free by Parcel Post.

Balls, Evening Parties, Dinners, Wedding Receptions and Garden Parties Contracted for.

— Estimates on application. —

Visitors to Chester will find every accommodation and an excellent Menu at
TABLE D'HÔTE LUNCHEON, 3/-

Bolland's Restaurant.
TABLE D'HÔTE DINNER, 4/6.

H. A. CLEGG,
Brook Street,
CHESTER.

Masonry Contractor,

MEMORIALS

IN

Granite, Marble and Stone.

Designs and Estimates on application.

Public Sawing

. . . AND . . .

Planing Mills.

ALL KINDS OF
Mouldings, Spokes,
Felloes,
Scantlings,
Doors and
Boards,
etc.

BRITISH AND
FOREIGN

Timber . .
Merchant.

GEORGE HIBBERT.

Cow Lane Bridge,

CHESTER.

**COAL, LIME,
GRAVEL,
Sleepers,
Limestone,
MACADAM,**

&c., &c.

ROBT. W. KILLON.

Telephone
70.

A1, Coal Exchange,

CHESTER.

T. LOCKLEY,

DEALER IN ALL KINDS OF

British & Foreign Birds,

27, George Street,

CHESTER.

CAGES MADE TO ORDER.

Hartz Mountain Rollers a Speciality.

HYDE'S SEEDS AND SPRATT'S FOODS

OF ALL DESCRIPTIONS

McLELLAN BROS.,

Builders

AND

Contractors,

COW LANE BRIDGE,

CHESTER.

TELEPHONE 224.

Telephone No. 124. . .

**JOHN MAYERS & SON,
GENERAL
BUILDING CONTRACTORS.**

CONTRACTORS TO HIS MAJESTY'S GOVERNMENT.

Works executed under various Architects include—

**Churches, Banks, Hotels, Municipal Buildings,
Schools, Business Premises, Private Residences,
etc.**

**SPECIALITIES:—Bank and Shop Fixtures, Wood
Block Flooring, Oak Gates and Fencing, etc.,
Sanitary Work.**

OFFICE AND WORKS:

Canal Side, Queen St., **CHESTER.**

19, UPPER NORTHGATE STREET
(Opposite Delamere Street).

HENRY VERNON,

Store Yard: KING STREET.

Office & Workshop: 19, UPPER NORTHGATE ST.

Builder, &c.

*Special and Personal Attention to
Sanitary Work, Ranges, &c.*

All kinds of BUILDING MATERIAL and SANITARY
GOODS kept in Stock.

Your patronage respectfully solicited.

ESTIMATES GIVEN.

BERESFORD ADAMS,

Estate Agent

and Valuer,

Valuer for Starr-Bowkett and other
Building Societies.

**22, NEWGATE STREET,
CHESTER.**

Tinwald House, 
HESWALL.

DAY AND BOARDING SCHOOL

FOR THE

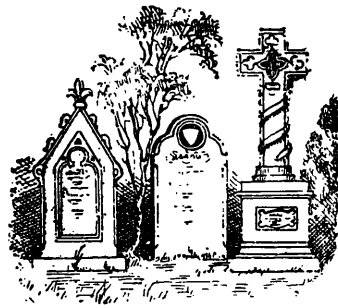
Daughters of Gentlemen.

Principal = = **MISS BUTCHER.**

INSTRUCTION in Religious Knowledge, English Language, Composition, Literature, Hygiene, Science, Ancient and Modern History, Arithmetic, Algebra, Euclid, Political Economy, Music Theory, French, German, Latin and Greek.

PUPILS prepared for the University Local Examinations.

HESWALL is considered one of the healthiest and most picturesque parts of Cheshire.



Headstones,

Tombs,

Monuments,

EXECUTED IN

**Granite, Marble
and Stone,**

BY

H. BERRY & SONS,
Builders & Monumental Masons.

LETTERING and POLISHING of all descriptions done by experienced workmen for the Cemetery or any part of the country.

Monumental Works: **Prestbury Road & Hurdfield Road,**
MACCLESFIELD.

Telegrams :

"SUGAR, MACCLESFIELD."

ESTD.



1850.

TELEPHONE

No. 44.

Sole Proprietors of the Celebrated BULA Specialities.

S. & W. BERISFORD, 
44 & 46, Mill Street, MACCLESFIELD.

Wholesale and Family **Wine & Spirit Merchants.**

GROGERS, TEA, COFFEE & PROVISION MERCHANTS.

Importers of the Finest Havana and Continental Cigars, Cigarettes, etc. 



WRITE FOR SAMPLES AND PRICE LISTS.

Telephone No. 24.

ESTABLISHED 1811.

The People's Popular  Up-to-Date Provider.

JAMES EARLAM,
→ FAMILY GROCER, ←

Provision Importer, Corn and Flour Merchant,

VICTORIA BUILDINGS, 

Queen Victoria Street, MACCLESFIELD.

ESTABLISHED 1826.

NATIONAL TELEPHONE 0179.

TOM HALL & CO.,

Whiskey Blenders,

WHOLESALE AND FAMILY

Wine and Spirit Merchants.

Proprietors of the Celebrated **GLEN TULLICH and GLENLAGGAN.**
Scotch Whiskies—

— **SOLE SHIPPERS OF** —

DUPRES & FILS' CHAMPAGNE, EPERNEY, 52/- PER DOZEN.

LOUARRE & CO., CUVÉE SPECIALE, RHEIMS, 65/- PER DOZEN.

Dealers & Bottlers of INVALID STOUT, BURTON ALES, &c. Importers of the Finest Havana & Continental Cigars.

PRICE LIST
UPON APPLICATION.**23, MILL STREET, MACCLESFIELD.**

ESTABLISHED 1836.

Telegrams: "IRON, MACCLESFIELD."

BENJAMIN HARLOW & SON,

Engineers & Ironfounders,

MACCLESFIELD;

And 30, Park Lane, LIVERPOOL.

PATENTEES OF HEATING APPARATUS FOR
CHURCHES, CHAPELS, SCHOOLS, GREEN-
HOUSES, &c.PATENTEES FOR IMPROVEMENT IN JOINTING
PIPES FOR HOT WATER, STEAM, GAS, &c.STEEL, WROUGHT AND CAST IRON BOILERS.
RADIATORS OF LATEST DESIGNS.

CONTRACTORS TO THE LONDON COUNTY COUNCIL.
ON CONTRACTORS' LIST FOR THE WAR OFFICE.

Fifteen Medals awarded for Improvements in Hot Water Heating Apparatus and Pipe Joints.

Prize Medal and Honourable Mention, Paris Exhibition, 1878.

SILVER MEDAL HEATING AND VENTILATING
EXHIBITION, CASSEL, PRUSSIA, 1877.SILVER MEDAL BUILDING TRADES' EXHIBITION,
MANCHESTER, 1896.

JOSEPH WESTWOOD,

*11a, King Edward Street, MACCLESFIELD;**Show Rooms: 11, KING EDWARD STREET.*

Plumber, Glazier & Gas Fitter.

SPECIALITIES:

Sanitary Plumbing and Draining Work.

Electric Bells and Telephones Fixed and Repaired.

Sanitary Inspection of House Drains, &c.

Gas Lighting with most improved Systems.

Heating by Gas, Hot Water, or Steam.

Mill Furnishing.

ESTIMATES ON APPLICATION.

Registered Master Plumber, London.

Honours Certificate, City and Guilds.

**PARK STREET SAW MILLS,
MACCLESFIELD.**

SAMUEL BULL,
.. BUILDER..
— AND —
CONTRACTOR.

Dealer in Building Materials.

— ALSO MAKER OF —

Bricks, Pipes, Glazed Mugware and Tree Pots, &c.

Nat. Tel. 0166.

JOHN CLAYTON,
Joiner, Builder & Contractor,
ASPHALTE PAVEMENT LAYER,
Dealer in **TIMBER, SLATES, CEMENT** and
SANITARY GOODS.
LIMESTONE ASPHALTE, GRANITE, SPAR, &c.
Builders' Merchant.
SAWING, PLANING AND MOULDING MILLS.
CONTRACTOR TO H.M. GOVERNMENT.

Honours Certificates in . . .
Building Construction, Carpentry and Joinery, &c.

Works and Office:

SUNDERLAND STREET, MACCLESFIELD.

B. COOKE,

✻ Joiner, Builder
And Contractor,
Buxton Road, MACCLESFIELD.

SAWING & PLANING BY MACHINE.



FUNERALS COMPLETELY FURNISHED.

**DEALER IN ALL KINDS OF BUILDING
MATERIALS.**

JOSEPH WELLINGS,

Joiner, Builder

.. Tel. 4 X. . . *and Contractor,*

DERBY STREET, MACCLESFIELD.

Dealer in **Timber, Sanitary Goods, Cement.**

DRAINING and VENTILATING WORK.

FUNERAL FURNISHER & UNDERTAKER.

Estimates for **New Work, Alterations, &c.**

Agent for **VENTILATING and SANITARY APPLIANCES.**

Drains Tested by Smoke Appliance.

Westbrook, Macclesfield.

KING EDWARD VI. SCHOOL.

THE REV. DARWIN WILMOT, M.A.

(Formerly Assistant Master at Marlborough and Rossall),

Receives a limited number of **BOARDERS AT
WESTBROOK**, well situated in large grounds away
from the town.

**NEW CLASS ROOMS, GYMNASIUM, LABORATORY,
SANATORIUM AND GOOD CRICKET GROUND.**

Annual Exhibitions to the Universities.

*Prospectus, references and list of recent honours on
application.*

Macclesfield Monumental Works.

ALFRED FRITH,

With a very large experience in the Monumental business, is
prepared to execute orders for all kinds of

MONUMENTS, TOMBS, HEADSTONES, TABLETS, &c.,

IN GRANITE, MARBLE, OR STONE.

LETTERING AND STONE CUTTING.

Designs supplied, or Architects' own designs correctly carried out.

**Competent Carvers and Letterers sent
to all parts of the Country.**

CHESTERGATE (OFFICES:
CATHERINE STREET,)

MACCLESFIELD.

TELEGRAMS: "IRONCLAD."

TELEPHONE 27.

GOLDEN  **IRONMONGERY STORES.**

General, Furnishing, Builders' and
.. Agricultural ..

Ironmongers.

Locksmiths, Gunsmiths,
Coppersmiths,
Gasfitters and . . .
Bellhangers. . .

THE LARGEST STOCK
IN THE DISTRICT
OF
Kitchen Ranges, Grates, Chimney
Pieces, Tiled Hearths, Fenders, Cutlery,
Lamps, &c.

A SPECIAL SHOW OF CYCLES, AGRICULTURAL
IMPLEMENTS AND DAIRY UTENSILS.

Works and Show Rooms— Cycle and Implements Show Rooms—
39, MILL STREET, 8 & 10, BACKWALLGATE,

MACCLESFIELD.

STEAM SAW MILLS.

**E. & A. FRITH,
JOINERS AND BUILDERS,**

Also Dealers in every description of

BUILDING MATERIALS.

English and Foreign Timber, Bricks and Tiles, Slates, Lime,
Cement and Plaster, Stone, Flags, and Drain and
Sanitary Pipes.

Moulding, Steam Sawing and Planing in general
to the Trade.

**Catherine Street,
MACCLESFIELD.**

T. HAYES,

**Commercial Temperance Hotel
and Restaurant,**

4, Jordangate, MACCLESFIELD

(3 minutes' walk from L. & N. W. and Great Central Stations.)

GOOD ACCOMMODATION FOR CYCLISTS.
BATH. BEDS.

CONTRACTORS TO H.M. OFFICE OF WORKS.

**JOINERS, BUILDERS,
WHEELWRIGHTS
And SMITHS.**

Builders' Merchants.

The largest and most
varied stock in the
district.

★
**Monumental
Masons.**

★
*Designs submitted.
Funerals undertaken.*

GEO. ROYLANCE & CO., Ltd.,
Waters Green,
MACCLESFIELD.

Established over 30 Years.

Exchange Street . . .
Carriage Works,
MACCLESFIELD.

R. STONIER & SONS,
**COACH
BUILDERS.**
Motor Bodies Made,
Repaired and Re-painted.

★
Painting and Repairs on Reasonable Terms.
Rubber Tyres Fitted. Estimates Given.

MOORE & BROCK, Builders' Merchants,

— AND COAL FACTORS, —

Telegraphic Address, "MAB."
TELEPHONE No. 2.

NORTHWICH.

ROOFING SLATES SUPPLIED FROM OUR DEPOTS—

BANGOR,
MOLD JUNCTION,

SALTNEY,
GARSTON,

RUNCORN,
NORTHWICH.

To every Railway Station in the Kingdom.

PENRHYN, VELINHELI, BANGOR, CARNARVON, PORT MADOC, WESTMORELAND and other ROOFING SLATES supplied on the Shortest Notice.

SLATE SLABS, RIDGING, CHIMNEY PIECES, CISTERNS, URINALS and every other Article manufactured in SLATE made to order. Also **ENAMELLED SLATE GOODS** of all kinds.

STAFFORDSHIRE GOODS.—Ridge, Flooring and Roofing Tiles, Garden Edging Tiles, Blue and White Bricks, Chimney Pots.

FIRE GOODS.—Bricks, Blocks, Bearers, Slabs, Retorts, Flue Covers and Linings, Fire Clay, &c.

SANITARY WARE.—Drain Pipes, Sinks, Traps, Grids, Cattle Troughs, &c.

Roman, Portland and Hydraulic Cements.

PLASTER OF PARIS, WHITING, LATHS, PLASTERERS' HAIR, at the Lowest Prices. **MARBLE and ENAMELLED CHIMNEY PIECES, GRATES, ROOFING FELT; BUXTON, WELSH and other LIME.**

Manufacturers of Common, Pressed, Moulded and all kinds of Red Building Bricks, Drain Pipes, &c.

Quotations sent by return of Post and Orders promptly executed. Strangers writing for Prices are requested to send References or to remit with Order.

Telegrams: "NOVELTY, NORTHWICH."

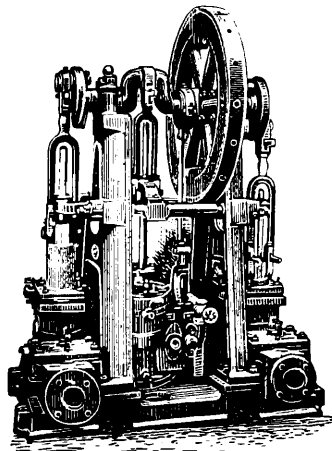
TELEPHONE No. 3.

RALPH WHITE & CO., Engineers, Millwrights, Brass and Iron Founders,

NOVELTY IRON WORKS, NORTHWICH, CHESHIRE.

SPECIALITIES.

Chemical Erections.
Vitriol, Bleach and other Plants contracted and estimated for.
Pyrites Burner Fronts, complete with Doors, Bearers, Bars, Inlet Hoppers, &c.
Tower Cylinders complete, and all kinds of Castings used in the Chemical Trade.
Acid Eggs a speciality.
Standard Eggs always on stock.
Locomotive, Traction and other Engine repairs.
All kinds of Agricultural Machinery repaired.
Railway Wagon Wheels turned up.
Axle Boxes, Brasses, Brake Blocks, &c. and all repairs.



MAKERS OF THE ABOVE
IMPROVED DOUBLE RAM STEAM PUMP.

SPECIALITIES.

Double Ram Pumps made of our special design and construction.
All other Pump apparatus
High Pressure Filter Presses
Columns, Brackets, Girders, and other Castings for the Building Trade.
Marine Engine Castings and loam work of all kinds a speciality.
Iron and Brass Founding.
Pipes and all general Castings.
Repairs and general Engineering
Improved original Springs and Plates for Card Cans.
Craven's Patent Frictionless Liquid Distributor.

**Angles. Fish-Plates. Steel Joists. Rivetted Girders.
Roofwork. Fitch-Plates.**

NOTCHING, JOGGLING AND MITRING.

HERBERT PARKES, Iron and Steel
Merchant,
St. Petersgate, STOCKPORT.

STOCKPORT.

Auctioneer

AND

Valuer.

JOHN BATEMAN.

Nat. Tel. 125.

26,

St. Peter's Gate.

Postal and Telegraphic Address:—
"BRADY & SON" in full.

National Telephones: Stockport, No. 132
Manchester, 08979

BRADY & SON, F.S.I., F.A.I.,

Auctioneers,

Surveyors, Valuers, &c.,

17, WARREN STREET,

STOCKPORT.

Established 1844.

And at 42, JOHN DALTON STREET,
MANCHESTER.

MERSEY PUBLIC SAW MILLS,

Heaton Lane, STOCKPORT.

Telephone, National No. 0994.

ADAM GOTHARD,

Timber Merchant & Builder.

Dealer in

Chimney Pots, Sanitary Pipes, Fire Bricks, Cement,
Plaster, Laths, Hair, &c., &c.

PACKING CASE MAKER.

PHILIP H. LANG,

Auctioneer,

Valuer, . .

ESTATE & INSURANCE AGENT.

1a, Warren Street,

Nat. Tel. 0902. . . **STOCKPORT;**

— AND —

OAK AVENUE, ROMILEY.

JAMES HENSHAW, Wheelwright and Smith.

Builder of **TRADE VEHICLES** to order

— AND OF —

TRAILERS for **MOTOR LURRIES.**

REPAIRS. ESTIMATES.

ESTABLISHED 1836.

STOCKPORT LURRY WORKS.

— TELEPHONE 282. —

C. B. BURROWS

(Late of the firm of T. V. BURROWS & SONS, Egremont),

Builder, Contractor,

— AND —

Painter, Decorator, Sign Writer,

PLUMBER & GASFITTER. &c.,

17, Grange Road, WEST KIRBY.

Branch: Albert Road, HOYLAKE.

House Repairs executed in all Branches.

SANITARY WORK A SPECIALITY.

*Gas Fittings, Gas Cookers, Electric Light Fittings,
Wall Papers, Paints, &c., &c.*

— CONTRACTOR TO H.M. GOVERNMENT. —

ESTABLISHED 1795.

GOLD MEDAL,
PARIS, 1900.



GOLD MEDAL,
ST. LOUIS, 1904.

By Appointment.

SLATER'S

Manchester, Salford

— AND —

Price 25s.

Suburban Directory for 1907

THIS DIRECTORY, as before, gives a topographical description of the City, an account of the principal Manufacturers, the Markets, and particulars of the Local Government; an Architectural Description of the Churches and other Public Buildings, with full particulars of the University, Colleges, Public Schools, &c., and there are the usual three distinct classifications:—

- (1) **STREETS**, Alphabetically arranged, with the names of the occupiers of the houses;
- (2) **ALPHABETICAL** or General List of the Professional Classes, the Wholesale and Retail Houses and Private Residents; and
- (3) **TRADES**, *i.e.*, Classified Lists of all those engaged in any business or trade, in Alphabetical order.

Lists are also given of the **Shipping, &c., Merchants** (with the Markets to which they ship and the class of goods shipped); and of **Home Trade Houses**; of the Members of the **Royal, Stock, Coal and Cotton Waste Exchanges**; of the **Legal and Medical Professions**; and of the **Gentry**; **The Bankers of the United Kingdom**, and a **Parliamentary List**.

KELLY'S DIRECTORIES LTD., 182-3-4, High Holborn, LONDON, W.C.

BRANCH OFFICES:

BIRMINGHAM: 1, Waterloo Street.
BRISTOL: 57, Victoria Street.

GLASGOW: 137, West Regent Street.
LEEDS: 9, South Parade.

LIVERPOOL: 10a, South Castle Street.
MANCHESTER: 37, Brown Street.

SHEFFIELD: 42, Church Street.

PARIS (Agency): 23, Rue de Vaugirard.

HAMBURG (KELLY & CO.): Brandstwiete, 44.

NEW YORK (KELLY PUBLISHING CO.): 5, Beekman Street.

CHESHIRE.

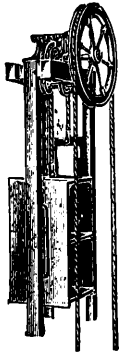
b

G. BRADY & CO.,

HOISTS AND LIFTS OF EVERY DESCRIPTION.

49, POTT STREET, ANCOATS, MANCHESTER.

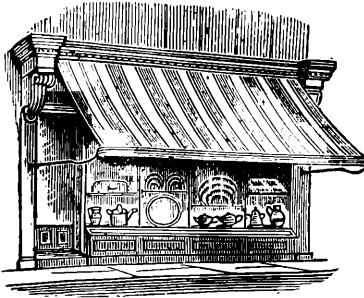
New Patent Noiseless Self-Sustaining Hand Power Service Lifts



For Hotels, Cafes, Mansions, Schools, Boarding Houses, etc., etc.

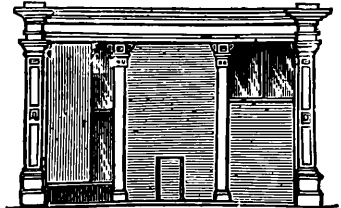
Simple, Safe and Reliable. Absolutely Noiseless. No Brake. No Springs. Single and Double Lifts. Always self-sustained. Positive quick action. No jerking, easily operated. Easy to fix. Compact and perfect.

SPRING ROLLER SHOP BLINDS.



INSIDE AND OUTSIDE BLINDS of every description, Spanish, Florentine, Awnings, &c., for Shops, Offices, and Private Residences.

REVOLVING SHUTTERS.
In Wood, Iron or Steel.



Suitable for all positions, Inside or Outside, balanced with Weights or Springs, for Book Cases, Shop Fronts, Windows, School Partitions, Motor Garages, Banks, Doorways, &c.

Prices, Drawings and all Particulars free on application.

RYLANDS BROS., Ltd.

WARRINGTON,

Manufacturers of all kinds of . . .

Iron and Steel Wire.

Specially prepared Tinned Steel Mattress Wire for Mattress Makers. Coppered Steel Spring Wire for Spring Makers. Fencing and Signal Strand. Best Telegraph and Telephone Wire.

TRADE



MARK.

A.D. 1805.



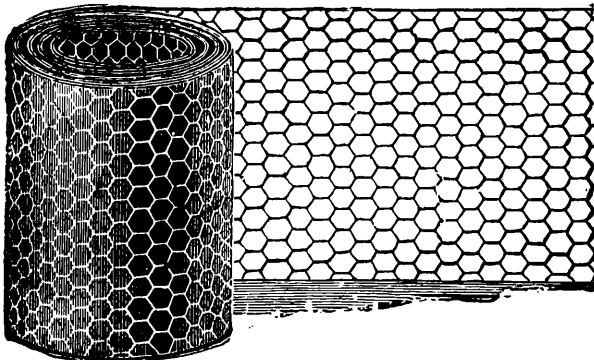
Specialities: FENCING WIRE.

Barbed Fencing Wire.



WIRE ROPES. All Qualities.

For MINES, SHIPS, GOLD DREDGING, &c.



GALVANIZED WIRE NETTING.

GUEST AND CHRIMES,

Foundry and Brass Works, Rotherham,
AND
132, SOUTHWARK STREET, LONDON, S.E.
PRIZE MEDALS.



1861.



52A.—WATER CLOSET AND FIRE COCK.



1862.

AWARDED.

Class 8.—FOR WATER METER, &c., SIEMENS'.

"PRACTICAL SUCCESS OF WATER METERS, &c.;
ORIGINALITY OF THE WHOLE."

1862.

AWARDED.

Class 31.—FOR WATER WORKS ARTICLES.

"PROGRESS IN FABRICATION OF USEFUL ARTICLES
FOR THE DISTRIBUTION OF WATER IN TOWNS."Agents at Hamburg:—Messrs. ALFRED BARBER and Co.
Agent at Brussels:—Mr. EDMOND LAMAL.BATEMAN & MOORE'S & CHRIMES' HYDRANTS OR FIRE COCKS.
Single and Double Air Valves.GUEST & CHRIMES' IMPROVED SLUICE COCKS, FOR WATER, STEAM, SEWAGE & GAS
(The body being cast in one piece.)

SIEMENS & ADAMSON'S WATER METER.

Chrimes' High Pressure Loose Valve Screw-down Cocks.

(Of the whole of the above G. & C. were the Original Manufacturers and Sole Licensees.)

RESERVOIR VALVES OF ALL DESCRIPTIONS.

REFLUX, RELIEF, AND PRESSURE REDUCING VALVES.
PATENT FEED REGULATING COCK.

Waste-Preventing Single and Double Valve Service Boxes.

IMPROVED SELF-ACTING & PULL WATER CLOSET.

PEARSON'S LOOKING APPARATUS FOR BATH SUPPLY FITTINGS.

LOWE'S EFFLUVIA TRAPS, BEGGS' IMPROVED.

NEWTON'S STREET GULLY.

STREET WATERING AND FIRE EXTINGUISHING APPARATUS.

F. SIEMENS' REGENERATIVE GAS BURNERS.

COWAN'S HIGH POWER GAS LAMPS.

Patent Storm-Proof "ARC" Lamps for Gas. "ARC" Lamps for Incandescent Gas Lighting.

IMPROVED LAMPS OF EVERY DESCRIPTION FOR ACETYLENE GAS.

GAS CHANDELIERS, BRACKETS, AND FITTINGS.

GOLDSMITH'S SIGHT WATER LINE INDICATING GAS METER.

ORDINARY WET AND DRY GAS METERS

PLUMBERS' AND GAS FITTERS' BRASSWORK OF EVERY DESCRIPTION.

PRICE LISTS ON APPLICATION.

ALL THE ABOVE ARTICLES MAY BE SEEN ON APPLICATION TO

GUEST & CHRIMES, BRASS WORKS, ROTHERHAM ;
Or to **THOMAS BEGGS & SON, 132, SOUTHWARK STREET, LONDON, S.E.**
Telegram Address:—"GUEST, ROTHERHAM."

ANNUALLY.

By Appointment.

KELLY'S DIRECTORY

OF THE

Merchants, Manufacturers and Shippers

OF THE WORLD,

BEING

A Guide to the Export, Import and Manufacturing Industries of the Country,

WITH WHICH IS AMALGAMATED

STREET'S INDIAN AND COLONIAL MERCANTILE DIRECTORY.

This Work contains Lists of the

Importers, Exporters, Merchants and Manufacturers of Great Britain and Ireland,
and the Principal Trading Centres of the World.

The Prosperity of the United Kingdom depends so greatly on the amount of the Export trade that all information tending to increase the knowledge necessary to promote this object is of especial interest to the Manufacturers and Shippers of Great Britain, and no efforts are spared to obtain the latest and fullest information, and the utmost degree of accuracy, for this Directory.

That there is a want for such a publication is proved by the issue of a crowd of English Books of more or less perfect information, and by the conspicuous success of an analogous French publication.

As the Result of an Application to H.M. Foreign Office for assistance from British Consuls abroad in the compilation, the publishers were honored by a letter, of which the following is an extract:—

“As, however, your Foreign Directory appears to be a work of considerable value to British Trade, LORD IDDESLEIGH would be glad if Her Majesty's Consuls should assist, as far as possible, in making it complete, and he will not object to their giving, on your application, such information of the nature specified as they may think advisable.”

The Publishers have consequently received the greatest amount of help from the various Consuls, and a copy of the work was, and will continue to be, sent to every British Consulate throughout the World. Many and flattering letters have been received from Consuls stating and pointing out how great must be the benefit to British Trade, and how much the work was referred to for information.

The Directory is divided into **Two Sections**, Foreign and Home.

The **First Division** embraces the British Colonies and Possessions throughout the World, and the various Foreign Countries and their Colonies to which British Manufactures are exported, arranged under the following Heads:—

INDIAN AND COLONIAL
POSSESSIONS.EUROPEAN.
AMERICA, North and South.ASIA.
AFRICA.

The **Second Division** embraces the names and addresses of the actual Manufacturers in the United Kingdom of the articles exported, classified in the usual way, describing as clearly as possible the specialities of each Manufacturer. Lists are also given of the Merchants and Shippers who export British Goods. Manufacturers who have either depôts abroad or Consignees, and who ship only their own goods, are indicated by a special mark. The object of the list is to show the Manufacturer who are the purchasers of his special class of goods for shipment.

This part of the Work is of great value to Buyers abroad, and also to the Merchant in this Country, by putting them in communication with the actual Manufacturers of such goods as are required abroad; while to Manufacturers it will be valuable, as showing them the Merchants and Shippers to the various Countries with which they may desire to do business.

KELLY'S DIRECTORIES LTD., 182, 183 and 184, High Holborn, London, W.C.

Branch Offices:

BIRMINGHAM: 1, WATERLOO ST. GLASGOW: 137, WEST REGENT ST. LIVERPOOL: 10A, SOUTH CASTLE ST.
 BRISTOL: 57, VICTORIA ST. LEEDS: 9, SOUTH PARADE. MANCHESTER: 37, BROWN ST.
 SHEFFIELD: 42, CHURCH ST.
 PARIS: (AGENCY) 23, RUE DE VAUGIRARD. HAMBURG: (KELLY & Co.) BRANDSTWIETE, 44.
 NEW YORK: (KELLY PUBLISHING Co.) 5, BEERMAN ST.